

VICTORY

PROJECT: _____
ITEM # _____ QTY: _____
MODEL # _____
AIA # _____ SIS # _____

SANDWICH PREP REFRIGERATOR WITH DRAWERS

SANDWICH PREP REFRIGERATOR WITH DRAWERS VSPD72HC-18-4



CABINET CONSTRUCTION

- Stainless Steel Exterior (galvanized back and bottom)
- Aluminum Interior
- Hinged, Insulated Flat Lift Up-Lid
- One-Piece, Snap-In Magnetic Door/Drawer Gaskets
- Heavy-Duty Pan Liner
- 8' Cord And Plug (see electrical data for details)

REFRIGERATION

- Refrigeration System Uses R-290 Refrigerant To Comply With All Environmental Concerns
- Rear Mounted Refrigeration System
- Adaptive Defrost For Reduced Energy Consumption And More Consistent Product Temperatures
- Epoxy Coated Evaporator Coil
- Refrigerator Capable Of Maintaining Product Temperature 36°F to 38°F

FEATURES

- Full Electronic Control
- Low Profile Horizontal Door/Drawer Handles
- Cartridge Style Hinges
- Epoxy Coated Shelves (2 per section)
- Stay-Open Door/Drawer Feature For Easy Product Loading
- Accommodates Up To 6" Deep Food Service Pans
- Heavy-Duty Stainless Steel Drawer Frames
- Heavy-Duty Pan Divider Supports Supplied
- Locking Divider Bars
- Telescoping Drawers Slides With Locking Mechanism
- Accommodates 6" Deep Full Size Food Service Pans In Both Upper And Lower Drawers (pans not included)
- 10" Composite Cutting Board
- 6" Casters Two With Brakes

- ▶ 3 Year Parts & Labor Warranty
Plus An Additional 4 Year Compressor Warranty
- ▶ Exclusive 2 Year Warranty On Magnetic Door/Drawer Gaskets
- ▶ Lifetime Warranty On Handles & Hinges (Parts Only)



Please verify qualifying units by visiting:
www.energystar.gov/cfs

OPTIONS & ACCESSORIES

- Secure-Temp™ Technology
- Stainless Steel Interior
- Stainless Steel Back
- Door/Drawer Locks
- Door Swing Orientation (at time of order)
- Exterior Door Laminate
- Garnish Rack (full & half pan)
- Single Or Double Overshelf Kit
- Silver Freeze Shelves (chrome style)
- Shelf Divider
- Front or Side Crumb Catcher
- 12" Cross Bar
- Roll Top Cover
- 12 Pan cover
- 6" Legs or 6" Seismic Legs
- Casters: 3", Roller Kit, Low Profile
- Correctional Package
- Remote Models* (6" legs only)
(refrigerant must be specified at time of order, see note on back on page)

3779 Champion Blvd, Winston-Salem, NC 27105

ph: (888) 845-9800 | fax: (800) 253-5168

Sales@VictoryRefrigeration.com | VictoryRefrigeration.com

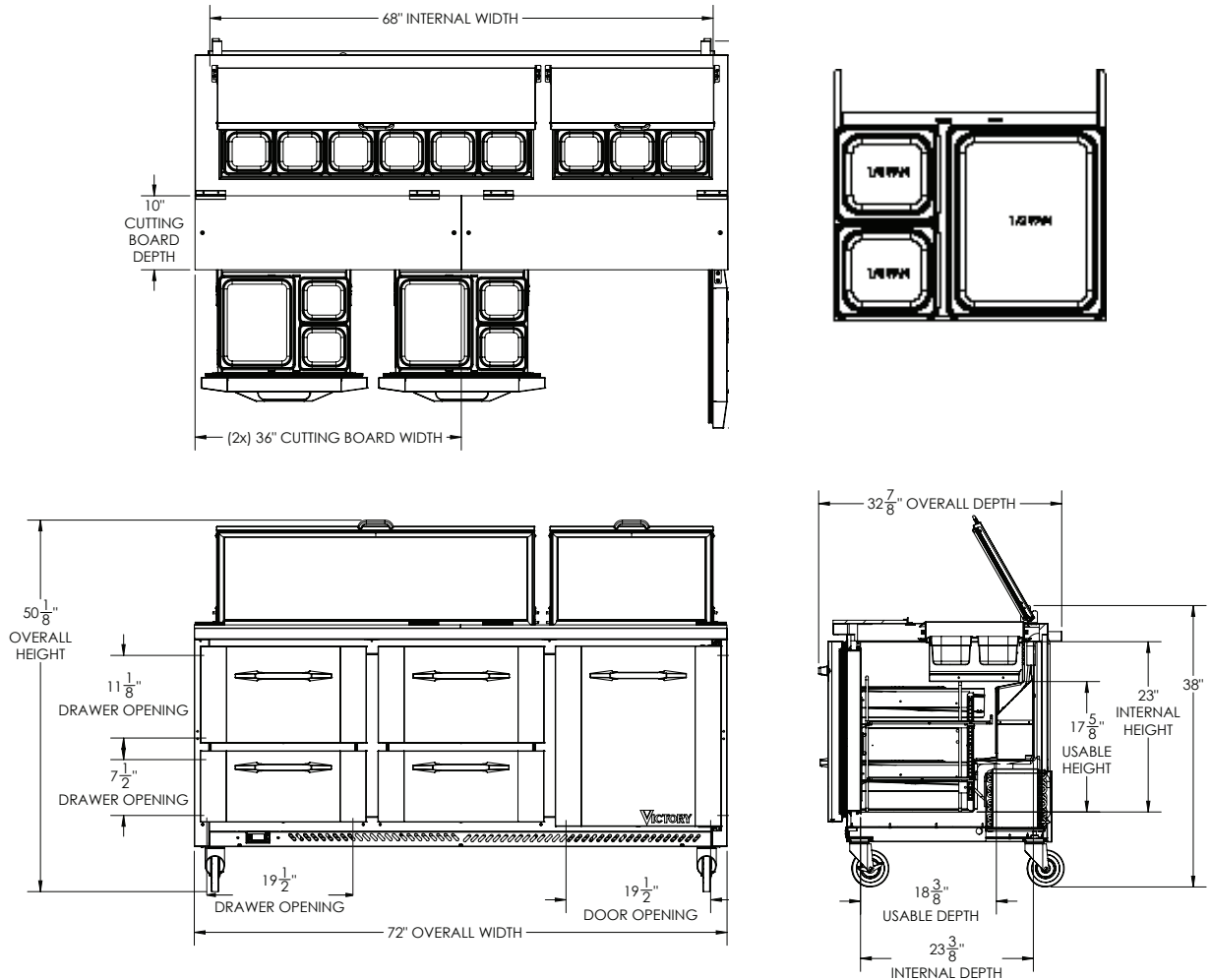
Rev. 1/6/20 Printed in U.S.A.

APPROVAL: _____ DATE: _____



SANDWICH PREP REFRIGERATOR WITH DRAWERS

VSPD72HC-18-4



We reserve the right to change specifications and product design without notice. Such revisions do not entitle the buyer to corresponding changes, improvements, additions or replacements for previously purchased equipment. Dimensional tolerances +/- 1/4". Metric dimensions (MM)

CHARACTERISTICS		ELECTRICAL DATA		SHIPPING DETAILS	
Net Capacity	20.0	Cabinet Voltage	115/60/1	Height	49"
Width, Overall (in.)	72"	Total Amperes	5.4	Width	74"
Depth, Overall (with handle & bumper)	32 7/8"	NEMA Plug* (8' cord)	5-15P	Depth	38"
Height Overall (6" casters)	50 1/8"	REFRIGERATION DATA		Crated Weight	508 lbs
Depth, Door Open 90°	52 1/4"	Condensing Unit Size, HP*	1/3	*NOTE: Remote units are field wired and comes with 6" legs. Refrigerant must be specified at time of order.	
Drawer Openings (in.)	19 1/2" x 11 1/8" 19 1/2" x 7 1/2"	Refrigerant*	R-290		
Door Openings (in.)	19 1/2" x 21 5/8"	Capacity (BTU/HR) (100°F/20°F)	2291		
No. Of Door/Shelves/Drawers	1/2/4	No. Of Pans	18		

3779 Champion Blvd, Winston-Salem, NC 27105 | ph: (888) 845-9800 | fax: (800) 253-5168

Sales@VictoryRefrigeration.com | VictoryRefrigeration.com

Rev. 1/6/20 Printed in U.S.A.

an Ali Group Company



The Spirit of Excellence