



DIRECT STEAM PEDESTAL TILTING KETTLE



MODEL	CAPACITY	
DPT-20	20 Gallon	76 Liter
DPT-30	30 Gallon	114 Liter
DPT-40	40 Gallon	152 Liter
DPT-60	60 Gallon	227 Liter
DPT-80	80 Gallon	303 Liter

OPERATION SHALL BE BY:

Direct steam at a minimum of 5 psi (34 kPa) and a maximum of 30 psi (206 kPa).

OPTIONAL ITEMS AT EXTRA COST:

- 50 PSI (345 kPa) high pressure operation for higher cooking temperature
- 2" (76 mm) draw-off valve (TVT-2) with perforated strainer (TPS-)
- 3" (76 mm) draw-off valve (TVT-3) with perforated strainer (TPS-)
- Spring assist hinged cover (CH-)
- Etched gallon markings (GM-)
- Etched litre markings (LM-)
- Correctional package
- Single pantry faucet with swing spout (SF-18)
- Double pantry faucet with swing spout (DF-18)
- One piece lift off cover (C-)
- Triple basket assembly (TBA-)
- Steam trap assembly (STA-2)
- Solid stainless steel disc for draw-off valve (TSS-)
- Strainer hook (SH-)
- Graduated measuring strip (CMS-)
- Pan carrier (PC-4)
- Pour lip strainer (TKS-)
- Draw-off valve hose kit (DVHK-)
- Kettle heat shield (KHS-)

SPECIFICATIONS:

Shall be a Crown model _____, direct steam connected, pedestal tilting kettle. A double wall kettle interior shall form a steam jacket around the lower 2/3 of the kettle. The bottom of the kettle shall be of hemispherical design for superior heat circulation. The pedestal base shall have four 7/16" (11 mm) holes evenly spaced for securing to the floor. A sealed tilting mechanism shall permit the kettle to tilt forward a full 90° for complete emptying. The tilting mechanism shall be self locking for positive stop action. Faucet bracket standard.

Construction shall be all welded, satin finish, stainless steel, type 304. The kettle interior shall be standard stainless steel type 316 for high acid content cooking.

The kettle shall be ASME Code stamped, National Board Registered and NSF certified. Faucet bracket included.

Job _____
Item# _____



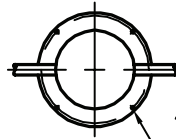
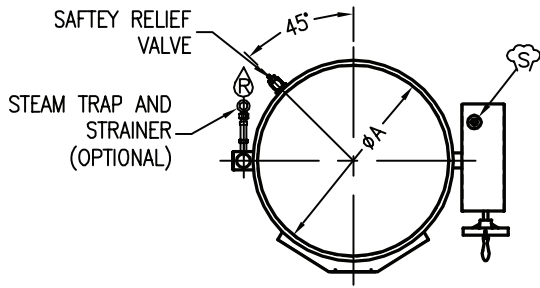
Models: DPT-20

DPT-30

DPT-40

DPT-60

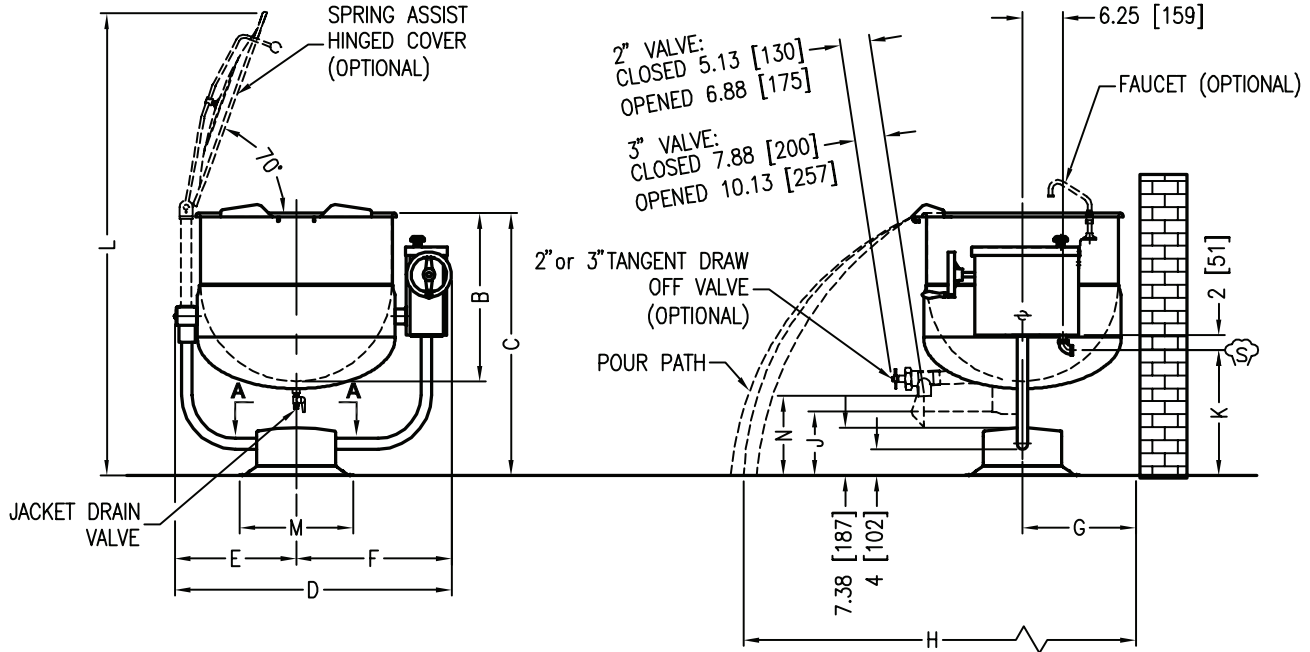
DPT-80



4X $\phi 7/16$ [11] EQ. SPACED
ON 16.62 [422] B.C. (20 TO 60 GALLONS)
ON 19.62 [498] B.C. (80 GALLONS)

VIEW A-A

MODEL	SHIPPING WEIGHT	MINIMUM CLEARANCE	
DPT-20	230 lbs. [104 kg]	SIDES	0" [0 mm]
DPT-30	275 lbs. [125 kg]		
DPT-40	320 lbs. [145 kg]		
DPT-60	350 lbs. [159 kg]	BACK	3" [76 mm]
DPT-80	410 lbs. [186 kg]		



DIMENSIONS

MODEL	CAPACITY	UNITS	A	B	C	D	E	F	G	H	J	K	L	M	N(2")	N(3")
DPT-20	20 gallons (76 liters)	in (mm)	21" (535)	18" (460)	37" (940)	34.75" (883)	14.75" (375)	20" (508)	13.5" (343)	41" (1041)	15.25" (387)	20.5" (521)	59.5" (1512)	17.5" (445)	16.75" (425)	16.25" (413)
DPT-30	30 gallons (114 liters)	in (mm)	24" (610)	20" (510)	37" (940)	37.75" (959)	16.25" (413)	21.5" (546)	14" (356)	43" (1092)	13.25" (337)	20" (508)	62.5" (1588)	17.5" (445)	14.75" (375)	14.25" (362)
DPT-40	40 gallons (152 liters)	in (mm)	26" (660)	22.5" (570)	37" (940)	39.75" (1010)	17.25" (438)	22.5" (572)	15.5" (394)	45" (1143)	10.75" (273)	18.5" (470)	64" (1626)	17.5" (445)	12.25" (311)	11.75" (298)
DPT-60	60 gallons (227 liters)	in (mm)	29.5" (750)	26" (660)	40.5" (1029)	43" (1092)	18.88" (479)	24.13" (613)	17.5" (445)	48" (1219)	10.25" (260)	19.25" (489)	74" (1879)	17.5" (445)	14.25" (362)	13.75" (349)
DPT-80	80 gallons (303 liters)	in (mm)	33" (840)	28" (710)	42.5" (1080)	46.5" (1181)	20.63" (524)	25.88" (657)	19" (483)	52" (1321)	9.75" (248)	20.5" (521)	76" (1930)	20.5" (521)	12.25" (311)	11.75" (298)

SERVICE CONNECTIONS

- STEAM SUPPLY: 3/4" IPS (19 mm) 5-30 PSI (34-207 kPa). Optional 5-45 PSI (34-310 kPa)*

- CONDENSATE RETURN: 1/2" IPS (13 mm)

* Pressure reducing valve is required if incoming pressure exceeds 50 PSI (345 kPa).

**INTENDED FOR COMMERCIAL USE ONLY.
NOT FOR HOUSEHOLD USE.**



70 Oakdale Road, Toronto ON, Canada M3N 1V9
(919) 762-1000 www.crownsteamgroup.com