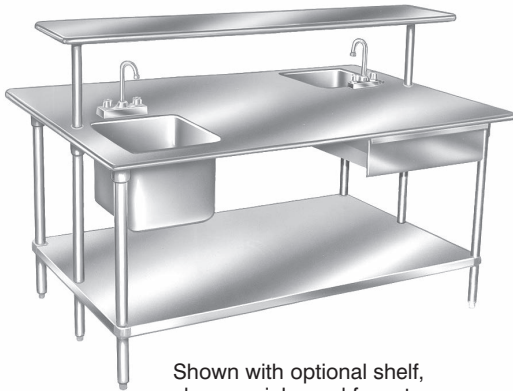




STAINLESS STEEL  
**WORK TABLES**  
 PREMIUM Series - Flat Top - 48" Wide

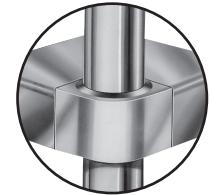


Shown with optional shelf, drawer, sinks and faucets

Item #: \_\_\_\_\_ Qty #: \_\_\_\_\_  
 Model #: \_\_\_\_\_  
 Project #: \_\_\_\_\_



**Rolled Rim Edges on Front & Back and Square Side Edges**



*Featuring as Standard:*  
**"THE PROVEN"**  
**ORIGINAL ADVANCE TABCO Adjustable Undershelf with Die Cast Leg Clamp**

**FEATURES:**

Top is furnished with 1-5/8" sanitary rolled rim edges on front & back and square side edges.  
 Four hat channels stud welded to reinforce & maintain a level working surface.  
 Pre-engineered welded angle adapters insure ease of future drawer installation.

**SS-GLG Series:**

Aluminum die cast "leg-to-shelf" to leg eliminating unsightly nuts & bolts. Undershelf is adjustable.

**TSS-TGLG Series:**

Front to Back Leg Stretchers welded to legs and requires assembly. Left to Right Stretcher bolted to legs.

**CONSTRUCTION:**

All TIG welded. Exposed weld areas polished to match adjacent surfaces.  
 Entire top mechanically polished to a satin finish.  
 Top is sound deadened.  
 Roll formed embossed galvanized hat channels are secured to top by means of structural adhesive and weld studs.  
 Gussets welded to support hat sections.

**MATERIAL: Undershelf (VSS-VLG)**

- TOP:** 14 gauge stainless steel type "304" series.
- SHELF:** SS-Series: 18 gauge stainless steel  
 GLG-Series: 18 gauge galvanized steel.
- LEGS:** TSS-Series: 1 5/8" dia. tubular stainless steel with **stainless steel** gussets & bullet feet.  
 TGLG-Series: 1 5/8" dia. tubular galvanized steel with galvanized steel gussets.  
 1" adjustable plastic bullet feet.

**MATERIAL: Open Base (TSS-TGLG)**

- TOP:** 14 gauge stainless steel type "304" series.
- STRETCHERS:** TSS-Series: 1-5/8" dia. tubular stainless steel  
 TGLG-Series: 1-5/8" dia. tubular galvanized steel.
- LEGS:** TSS-Series: 1-5/8" dia. tubular stainless steel with **stainless steel** gussets & bullet feet.  
 TGLG-Series: 1-5/8" dia. tubular galvanized steel with galvanized steel gussets.  
 1" adjustable plastic bullet feet.

L	Stainless Steel	Galvanized Steel	Stainless Steel	Galvanized Steel
48"	SS-484	GLG-484	TSS-484	TGLG-484
60"	SS-485	GLG-485	TSS-485	TGLG-485
72"	SS-486	GLG-486	TSS-486	TGLG-486
84"	SS-487	GLG-487	TSS-487	TGLG-487
96"	SS-488	GLG-488	TSS-488	TGLG-488
108"	SS-489	GLG-489	TSS-489	TGLG-489
120"	SS-4810	GLG-4810	TSS-4810	TGLG-4810
132"	SS-4811	GLG-4811	TSS-4811	TGLG-4811
144"	SS-4812	GLG-4812	TSS-4812	TGLG-4812

UNDERSHELF STYLE
 OPEN BASE STYLE

OPTIONAL ACCESSORIES	Model #	Qty
Drawer		
Lock		
Sink		
Casters		
Shelving		
Duplex Recept.		
16 Ga. S/S 304 Legs		



**Customer Service Available To Assist You 1-800-645-3166 8:30 am - 7:00 pm E.S.T.**

For Orders & Customer Service:  
 Email: customer@advancetabco.com or Fax: 631-242-6900

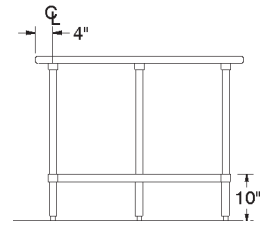
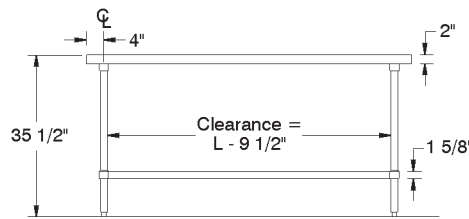
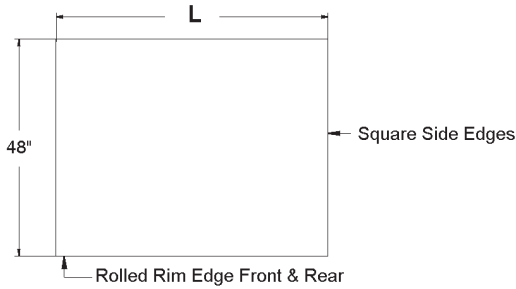
For Smart Fabrication™ Quotes:  
 Email: smartfab@advancetabco.com or Fax: 631-586-2933

# DIMENSIONS and SPECIFICATIONS

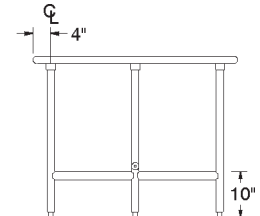
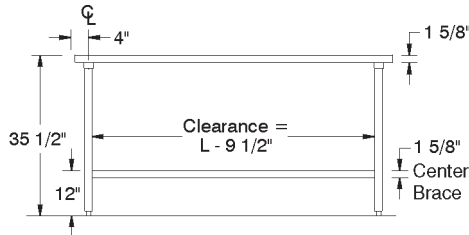
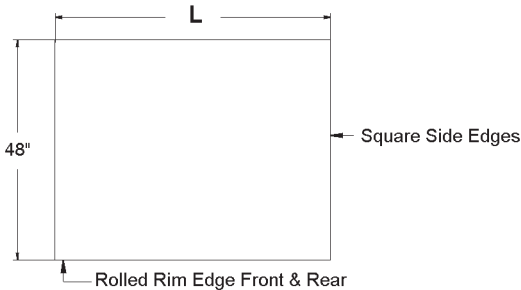
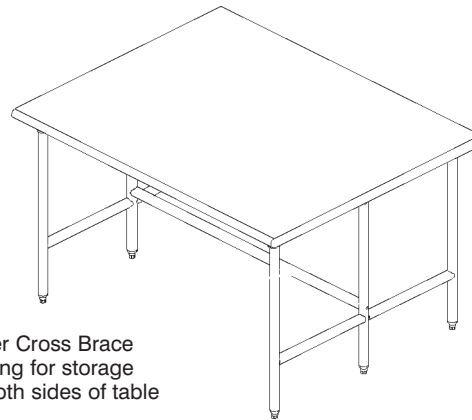
ALL DIMENSIONS ARE TYPICAL TOL ± .500"

Units 8 ft. and larger are furnished with nine (9) legs. All Units Shipped Unassembled (KD) for Reduced Shipping Costs.

## SS-Series - S/S Legs & UNDERSHELF - Countertop Edge



## TSS-Series - S/S Legs & OPEN BASE- Countertop Edge



L	Stainless Steel	Galvanized Steel	Wt.	Stainless Steel	Galvanized Steel	Wt.
48"	SS-484	GLG-484	158 lbs.	TSS-484	TGLG-484	128 lbs.
60"	SS-485	GLG-485	184 lbs.	TSS-485	TGLG-485	148 lbs.
72"	SS-486	GLG-486	218 lbs.	TSS-486	TGLG-486	170 lbs.
84"	SS-487	GLG-487	260 lbs.	TSS-487	TGLG-487	206 lbs.
96"	SS-488	GLG-488	290 lbs.	TSS-488	TGLG-488	228 lbs.
108"	SS-489	GLG-489	322 lbs.	TSS-489	TGLG-489	260 lbs.
120"	SS-4810	GLG-4810	522 lbs.	TSS-4810	TGLG-4810	454 lbs.
132"	SS-4811	GLG-4811	601 lbs.	TSS-4811	TGLG-4811	517 lbs.
144"	SS-4812	GLG-4812	616 lbs.	TSS-4812	TGLG-4812	532 lbs.

