



PROJECT: _____
ITEM # _____ QTY: _____
MODEL # _____
AIA # _____ SIS # _____

ROLL-IN EXTRA TALL REFRIGERATOR

ROLL-IN EXTRA TALL REFRIGERATOR

RISA-2D-S1-XH-HC



CABINET CONSTRUCTION

- Stainless Steel Exterior
- Aluminum Interior
- Heavy-Duty Cam Hinges
- Stay-Open Door Feature For Easy Product Loading
- Heavy-Duty 20 Gauge Stainless Steel Door
- Heavy-Duty Cylinder Lock
- Stainless Steel Interior Door Liner
- Adjustable Door Wiper Gasket
- One-Piece, Snap-In Magnetic Door Gasket
- Low Profile Vertical Door Handle
- Hinged Front Shroud
- Energy Saving Thermal Breaker With Stainless Steel Breaker Caps
- Accepts carts (one per door section) 26 1/2"W x 29"D x 72"H (cart not included)
- 8' Cord and Plug (see electrical data for details)

FEATURES

- Full Electronic Control With Touchpoint Interface
- Expansion Valve Technology
- One Touch Defrost
- Manager's Lockout Feature
- High Performance, Balanced, Top-Mounted Refrigeration
- Anti-Condensate Door Perimeter Heaters

REFRIGERATION

- Refrigeration System Uses R-290 Refrigerant To Comply With All Environmental Concerns
- Hot Gas Condensate Evaporator
- Adaptive Defrost For Reduced Energy Consumption And More Consistent Product Temperatures
- Epoxy Coated Evaporator Coil, Located Out Of The Food Zone
- Refrigerator Capable Of Maintaining Product Temperature 36°F to 38°F



Please verify qualifying units by visiting:
www.energystar.gov/cfs



- ▶ 3 Year Parts & Labor Warranty
Plus An Additional 4 Year Compressor Warranty
- ▶ Exclusive 2 Year Warranty On Magnetic Door Gaskets
- ▶ Lifetime Warranty On Handles & Hinges (Parts Only)

OPTIONS & ACCESSORIES

- Secure-Temp™ Technology
- Exterior Laminate
- Correctional Facilities Option
- Stainless Steel Back
- FlexTemp Maintain Between 28°F And 38°F
- Stainless Steel Exterior Floor (base)
- Door Swing Orientation (at time of order)

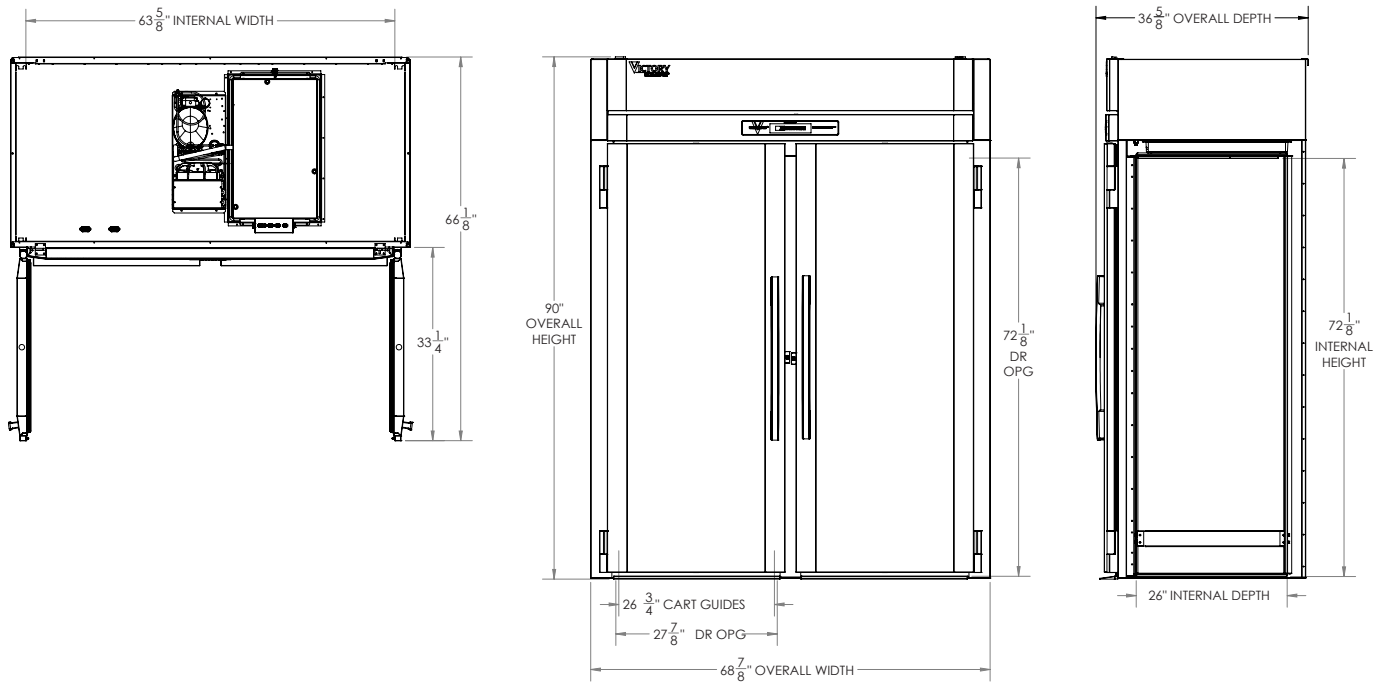
3779 Champion Blvd, Winston-Salem, NC 27105

ph: (888) 845-9800 | fax: (800) 253-5168

Sales@VictoryRefrigeration.com | VictoryRefrigeration.com

Rev. 6/4/20 Printed in U.S.A.

APPROVAL: _____ DATE: _____



We reserve the right to change specifications and product design without notice. Such revisions do not entitle the buyer to corresponding changes, improvements, additions or replacements for previously purchased equipment. Dimensional tolerances +/- 1/4". Metric dimensions (MM)

Required Clearance: Top 12", Rear 3", Sides 0"

CHARACTERISTICS		ELECTRICAL DATA		SHIPPING DETAILS	
Net Capacity (cubic ft)	77.35	Cabinet Voltage	15/60/1	Height	95"
Width, Overall (in.)	$68\frac{7}{8}$ "	Total Amperes	8.5	Width	84"
Depth, Overall (with handle)	$36\frac{5}{8}$ "	NEMA Plug* (8' cord)	5-15P	Depth	48"
Height Overall	90"	REFRIGERATION DATA		Created Weight	725 lbs
Depth, Door Open 90°	$66\frac{1}{8}$ "	Condensing Unit Size, HP*	3/4		
Door Opening (in.)	$27\frac{7}{8}$ " x $72\frac{1}{8}$ "	Refrigerant*	R-290		
No. Of Doors	2	Capacity (BTU/HR) (100°F/20°F)	Variable Speed Technology		

3779 Champion Blvd, Winston-Salem, NC 27105

ph: (888) 845-9800 | fax: (800) 253-5168

Sales@VictoryRefrigeration.com | VictoryRefrigeration.com

Rev. 6/4/20 Printed in U.S.A.

an Ali Group Company



The Spirit of Excellence