

Perlick® SELF-CONTAINED BACK BAR REFRIGERATOR

1-, 2-, 3- AND 4-DOOR



BBS36 with optional glass/w/ stainless steel door shown



BBS36 with optional wine drawers shown



eco friendly
R290
Hydrocarbon
Refrigerant

| | |
|-----------|--|
| JOB | |
| AREA | |
| ITEM NO. | |
| MODEL NO. | |

| | |
|---------------|--------------|
| BBS36 | 1-Door Model |
| BBS60 | 2-Door Model |
| BBS84 | 3-Door Model |
| BBS108 | 4-Door Model |

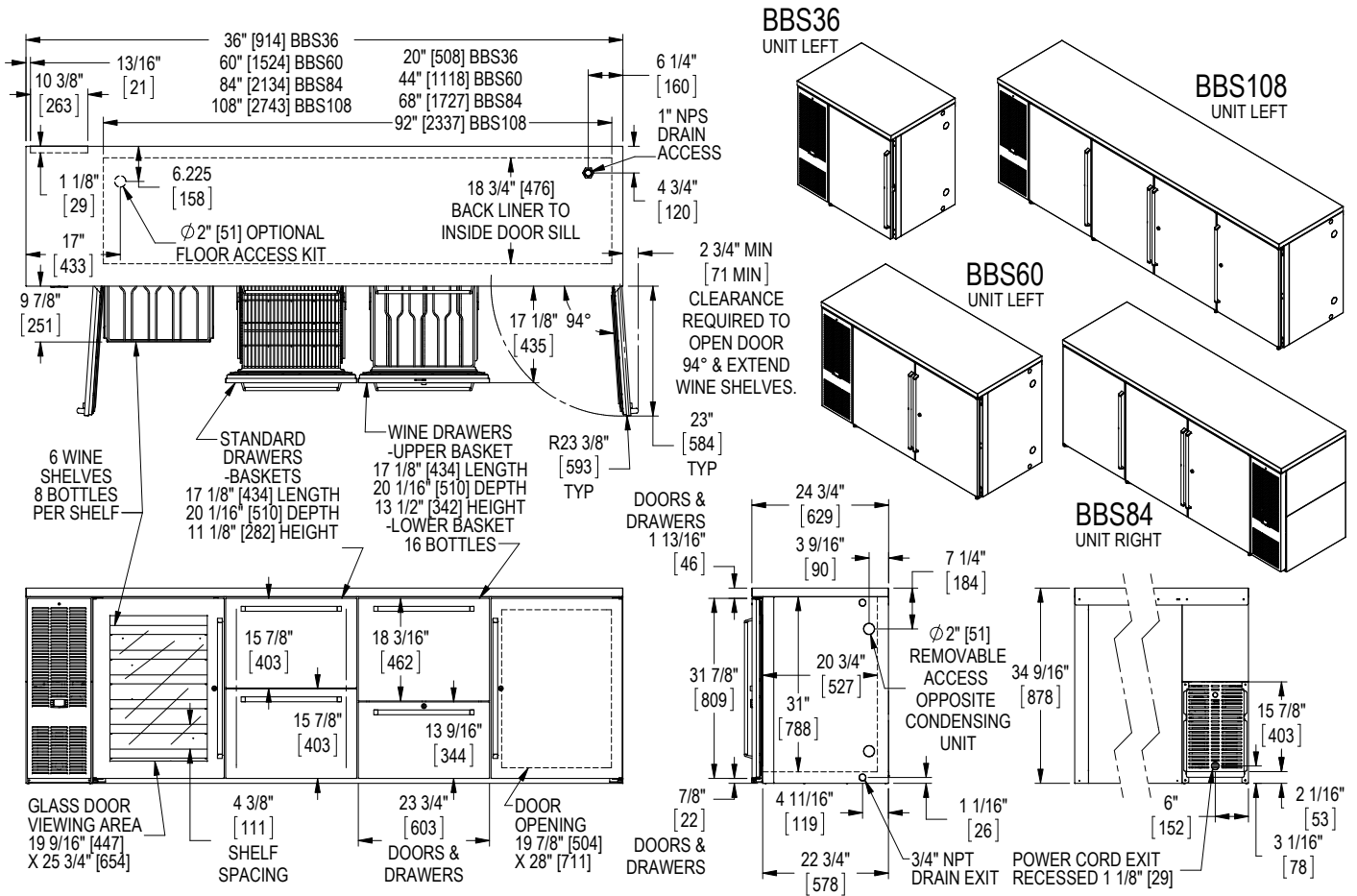
NSF/ANSI Standard 7 Listed for open food storage.
Note: Models furnished with wine temperature are listed for the storage and display of bottled and canned products only.

| MODEL NUMBERS | | BBS36 | BBS60 | BBS84 | BBS108 |
|--|---|-----------------------|-----------------------|-----------------------|-----------------------|
| NUMBER OF COMPARTMENTS | | 1 | 2 | 3 | 4 |
| EXTERIOR CABINET DIMENSIONS | Length - in. (mm) | 36 (914) | 60 (1524) | 84 (2134) | 108 (2743) |
| | Depth - in. (mm) | 24¾ (629) | 24¾ (629) | 24¾ (629) | 24¾ (629) |
| | Height - in. (mm) | 34⅞ (878) | 34⅞ (878) | 34⅞ (878) | 34⅞ (878) |
| INTERIOR CABINET DIMENSIONS | Length - in. (mm) | 20 (508) | 44 (1118) | 68 (1727) | 92 (2337) |
| | Depth - in. (mm) | 18¾ (476) | 18¾ (476) | 18¾ (476) | 18¾ (476) |
| | Height - in. (mm) | 28½ (724) | 28½ (724) | 28½ (724) | 28½ (724) |
| INTERNAL VOLUME Net. Cu. Ft. (Litres) | | 7.4 (210) | 16 (453) | 24.8 (702) | 33.5 (949) |
| PRODUCT CAPACITY | CASE PACK - 12 OZ. BOTTLE/CAN | 182/273 | 371/553 | 581/868 | 791/1183 |
| | STAGGERED - 12 OZ. BOTTLE/CAN | 196/292 | 400/592 | 628/932 | 856/1272 |
| SHIPPING WEIGHT Lbs. (kg.) | | 254 (115) | 340 (154k) | 490 (222) | 671 (304) |
| ELECTRICAL SPECIFICATIONS | Electrical Supply | 120 VAC/60 Hz/1 Ph | 120 VAC/60 Hz/1 Ph | 120 VAC/60 Hz/1 Ph | 120 VAC/60 Hz/1 Ph |
| | Running Load Amps | 1.8 | 2.5 | 4.2 | 4.2 |
| | Electrical Connection | Cord connected | Cord connected | Cord connected | Cord connected |
| | Cord Plug Type | NEMA 5-15 | NEMA 5-15 | NEMA 5-15 | NEMA 5-15 |
| | Cord Length | 8' | 8' | 8' | 8' |
| | Defrost Initiation | Automatic | Automatic | Automatic | Automatic |
| | Defrost Type | Off cycle | Off cycle | Off cycle | Off cycle |
| | Thermostat | Digital control | Digital control | Digital control | Digital control |
| REFRIGERATION SPECIFICATIONS | Lighting Type | LED | LED | LED | LED |
| | Horsepower | 1/6 | 1/5 | 1/4 | 1/4 |
| | Refrigerant | R290 | R290 | R290 | R290 |
| | Refrigerant Charge (grams) | 90 | 100 | 90 | 90 |
| | Factory Temperature Setting - Refrigerator F (C) | 38° (3.3°) | 38° (3.3°) | 38° (3.3°) | 38° (3.3°) |
| | Temperature Range - Refrigerator F (C) | 33°-40° (0.5°-4.5°) | 33°-40° (0.5°-4.5°) | 33°-40° (0.5°-4.5°) | 33°-40° (0.5°-4.5°) |
| | Factory Temperature Setting - White Wine F (C) | 50°-55° (10.0°-13.0°) | 50°-55° (10.0°-13.0°) | 50°-55° (10.0°-13.0°) | 50°-55° (10.0°-13.0°) |
| | Factory Temperature Setting - Red Wine F (C) | 60°-65° (15.5°-18.0°) | 60°-65° (15.5°-18.0°) | 60°-65° (15.5°-18.0°) | 60°-65° (15.5°-18.0°) |
| | Temperature Range - Wine F (C) | 50°-65° (10.0°-18.0°) | 50°-65° (10.0°-18.0°) | 50°-65° (10.0°-18.0°) | 50°-65° (10.0°-18.0°) |
| | Condensing Unit Location | Left or Right | Left or Right | Left or Right | Left or Right |
| | Expansion Device | Capillary tube | Capillary tube | Capillary tube | Capillary tube |
| Pull-Out Condensing Unit | Yes | Yes | Yes | Yes | |
| Front Vented | Yes | Yes | Yes | Yes | |
| PLUMBING | | Automatically | Automatically | Automatically | Automatically |

Perlick® SELF-CONTAINED BACK BAR REFRIGERATOR

1-, 2-, 3- AND 4-DOOR

Note: Open floor drain not provided on models intended for non-packaged food.



California Prop 65 Notice:



WARNING: The materials used in this product may contain chemicals known to the State of California to cause cancer and birth defects or other reproductive harm, For more information go to www.P65Warnings.ca.gov.

Form No. 95176
Rev. 12.18.2018