

SpaceMaker™ iT1900 Ice Cube Machine

Indigo[®]NXT SpaceMaker™ iF1900 Ice Cube Machine

Models

- IDT1900W-261V
- IYT1900W-261V



IDT1900W-261V
Shown with optional IBW-M5 Marine Ice Bin

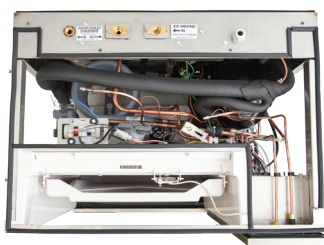
Marine Ice Machine Features

New Indigo SpaceMaker puts the utilities connection through the top panel allowing the machine to come in contact with the back and side walls saving valuable space in the galley.

- Standard IndigoNXT feature set with internal communication system that continually monitors refrigeration and sub-system controls 24/7.
- Front facing evaporator allows access to the Food zone for easy cleaning without removing the top lid.
- Isolation switch immediately cuts power to the entire unit.
- Completely sealed unit, top, front, back, top and sides.
- Meets USPHS specifications
- Top and Side panels designed to be removable even when fixed to the bulkhead, allowing easy access for servicing

Warranty

- 5-year parts-and-labor on evaporator.
- 5-year parts and 3-year labor on compressor.
- 3-year parts-and-labor on all other components.



Ice Shape



Half Dice
3/8" x 1 1/8" x 7/8"
(.95 x 2.86 x 2.22 cm)



Dice
7/8" x 7/8" x 7/8"
(2.22 x 2.22 x 2.22 cm)



| BALLOON | DESCRIPTION |
|---------|-----------------------------|
| A | ELECTRICAL ENTRANCE |
| B | 3/8" ICE MAKING IN |
| C | 1/2" ICE MAKING WATER DRAIN |
| D | 1/2" WATER CONDENSER OUTLET |
| E | 3/8" WATER CONDENSER INLET |

WATER CONDENSER INLET AND OUTLET DETAILS
SCALE 0.375

DETAIL A
SCALE 0.750

| Series 1900 | |
|------------------------------|------------------|
| IDT1900W | Dice Size |
| IYT1900W | half Cube Size |
| 29.5" H x 48" W x 24.5" D | |
| 74.9 H x 121.9 W x 62.2 D cm | |
| Approx. Net Wt. | 337 lbs / 153 kg |
| Approx. Gross Wt. | 352 lbs / 160 kg |

| Ice Machine Electric | |
|----------------------|-----------|
| Electricity | 208-230 v |
| Phase | Single |
| Cycle | 60 Hz |
| Max fuse size | 30 amp |
| Min Ampacity | 18.8 A |
| Machine Rating | 2500 W |

| Ice Machine Operating Limits | |
|------------------------------|----------------------------|
| Ambient Temperature | 40 to 110 F (4.4 to 43.3C) |
| Potable Water Temp. | 40 to 90 F (4.4 to 32.2C) |
| Water Pressure | Min 20 psi (137.9 kPA) |
| | Max . 80 psi (551.1kPA) |
| Condenser Water | Min 20 psi (137.9 kPA) |
| | Max. 276 psi (1902.95kPA) |

| Ice Production 24hours | | | | | | | | |
|---|-----------|---------------------------------------|--------|--|--------|-------------------------|-----------------|--------|
| Model | Ice Shape | 70 Air/50F Water 32 Air/21 C Water | | 90 Air/70F Water 21 Air / 10C Water | | kWh/100 lbs-45.4 kg ice | gal/100 lbs ice | |
| IDT1900W | dice | 1900 lbs | 862 kg | 1666 lbs | 755 kg | 3.51 | 20 Gal. | 75.7 L |
| IYT1900W | half-dice | 1960 lbs | 889 kg | 1758 lbs | 797 kg | 3.44 | 20 Gal. | 75.7 L |
| Water Cooled Condenser Water usage /100 lbs /45.4 kgs. of ice 145 gal/549 L | | | | | | | | |

This product is hermetically sealed and contains fluorinated greenhouse gas R410a.

Welbilt reserves the right to make changes to the design or specifications without prior notice.