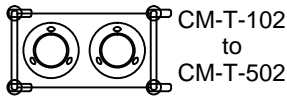
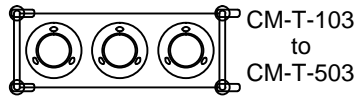
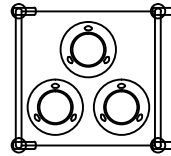
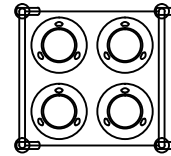


Self-Leveling Dispensers Open Tubular Style for Plates, Bowls, & Saucers (Unheated)


 CM-T-102
to
CM-T-502

 CM-T-103
to
CM-T-503

 CM-TQ-103
to
CM-TQ-503

 CM-T-104
to
CM-T-504

Two Dispenser Capacity up to 144 plates or 72 bowls **

| Model | Dish/Bowl Dia. | Length | Width | Height |
|----------|---|--------------------|--------------------|--------|
| CM-T-102 | up to 5 $\frac{3}{4}$ " | 26 $\frac{3}{4}$ " | 15 $\frac{3}{8}$ " | 37" |
| CM-T-202 | 5 $\frac{7}{8}$ " to 7 $\frac{1}{4}$ " | 26 $\frac{3}{4}$ " | 15 $\frac{3}{8}$ " | 37" |
| CM-T-302 | 7 $\frac{3}{8}$ " to 9 $\frac{1}{2}$ " | 32 $\frac{1}{2}$ " | 17 $\frac{1}{8}$ " | 37" |
| CM-T-402 | 9 $\frac{5}{8}$ " to 10 $\frac{1}{8}$ " | 32 $\frac{1}{2}$ " | 17 $\frac{1}{8}$ " | 37" |
| CM-T-502 | 10 $\frac{1}{4}$ " to 12" | 36 $\frac{1}{4}$ " | 19" | 37" |

Three Dispenser Capacity up to 216 plates or 108 bowls **

| Model | Dish/Bowl Dia. | Length | Width | Height |
|-----------|---|--------------------|--------------------|--------|
| CM-TQ-103 | up to 5 $\frac{3}{4}$ " | 26 $\frac{3}{4}$ " | 25 $\frac{3}{4}$ " | 37" |
| CM-TQ-203 | 5 $\frac{7}{8}$ " to 7 $\frac{1}{4}$ " | 26 $\frac{3}{4}$ " | 25 $\frac{3}{4}$ " | 37" |
| CM-TQ-303 | 7 $\frac{3}{8}$ " to 9 $\frac{1}{2}$ " | 32 $\frac{1}{2}$ " | 31 $\frac{1}{2}$ " | 37" |
| CM-TQ-403 | 9 $\frac{5}{8}$ " to 10 $\frac{1}{8}$ " | 32 $\frac{1}{2}$ " | 31 $\frac{1}{2}$ " | 37" |
| CM-TQ-503 | 10 $\frac{1}{4}$ " to 12" | 36 $\frac{1}{4}$ " | 35 $\frac{1}{4}$ " | 37" |

Three Dispenser Capacity up to 216 plates or 108 bowls **

| Model | Dish/Bowl Dia. | Length | Width | Height |
|----------|---|--------------------|--------------------|--------|
| CM-T-103 | up to 5 $\frac{3}{4}$ " | 38 $\frac{1}{4}$ " | 15 $\frac{3}{8}$ " | 37" |
| CM-T-203 | 5 $\frac{7}{8}$ " to 7 $\frac{1}{4}$ " | 38 $\frac{1}{4}$ " | 15 $\frac{3}{8}$ " | 37" |
| CM-T-303 | 7 $\frac{3}{8}$ " to 9 $\frac{1}{2}$ " | 46 $\frac{7}{8}$ " | 17 $\frac{1}{8}$ " | 37" |
| CM-T-403 | 9 $\frac{5}{8}$ " to 10 $\frac{1}{8}$ " | 46 $\frac{7}{8}$ " | 17 $\frac{1}{8}$ " | 37" |
| CM-T-503 | 10 $\frac{1}{4}$ " to 12" | 52 $\frac{1}{2}$ " | 19" | 37" |

Four Dispenser Capacity up to 288 plates or 144 bowls **

| Model | Dish/Bowl Dia. | Length | Width | Height |
|----------|---|--------------------|--------------------|--------|
| CM-T-104 | up to 5 $\frac{3}{4}$ " | 26 $\frac{3}{4}$ " | 25 $\frac{3}{4}$ " | 37" |
| CM-T-204 | 5 $\frac{7}{8}$ " to 7 $\frac{1}{4}$ " | 26 $\frac{3}{4}$ " | 25 $\frac{3}{4}$ " | 37" |
| CM-T-304 | 7 $\frac{3}{8}$ " to 9 $\frac{1}{2}$ " | 32 $\frac{1}{2}$ " | 31 $\frac{1}{2}$ " | 37" |
| CM-T-404 | 9 $\frac{5}{8}$ " to 10 $\frac{1}{8}$ " | 32 $\frac{1}{2}$ " | 31 $\frac{1}{2}$ " | 37" |
| CM-T-504 | 10 $\frac{1}{4}$ " to 12" | 36 $\frac{1}{4}$ " | 35 $\frac{1}{4}$ " | 37" |

** Actual capacities vary with shape of object to be dispensed.

General Specifications

Caddy Magic self-leveling dispenser to be Caddy Corporation model CM-_____.

Unit to have 16 gauge stainless steel reinforced top and 1" O.D. 16 gauge stainless steel tubular frame of all welded construction with stainless steel cross bracing on four sides. Casters to be 4" diameter heavy-duty swivel type with 3/4" stems and polyurethane tires.

Self-leveling cylinders to be field adjustable without the use of tools for china and plastic dishes, without requiring prior identification, irrespective of weight, height, or brand. Calibrating mechanism to have multiple extension springs peripherally suspended from a circular storage bank. Selective engaging of springs with dish carrier assembly to permit balancing and dispensing of any load within range of model selected. Each cylinder to have a 20 gauge stainless steel enclosure and 18 gauge stainless steel raised top flange, in high luster finish, with three 3" high plastic guide posts equally spaced.

Unit to be provided with the following accessories:

Accessories

- ACC-63** - 5" diameter swivel casters with polyurethane tires in lieu of 4" diameter swivel casters. (Add 1-1/8" to height)
- ACC-41** - Caster brakes on two diagonal casters.
- ACC-38** - Circular bumpers. (Add 4" to length and width)

CADDY CORPORATION
 509 Sharptown Road P.O. Box 345
 Bridgeport, NJ 08014-0345
 Tel: 856-467-4222 Fax: 856-467-5511
 internet: www.caddycorp.com