

PROJECT:	
MODEL #:	
ITEM #:	QTY:
AVAILABLE W/H:	APPROVAL:

Open Display Case



BOD-36G / BOD-48G



BOD-36S / BOD-48S



BOD-60G / BOD-72G



BOD-60S / BOD-72S

STANDARD FEATURES

Cabinet construction

- Steel cabinet construction
Precoated steel interior and exterior - durable and easy to clean
- High density foamed in place polyurethane insulation – Environmentally safe.
- Perforated interior rear wall and top vents for more efficient air circulation cooling
- Standard night curtain
- Four (4) 1" height adjustable shelves

Refrigeration

- R-404A Refrigerant

- Self-contained system, bottom mounted compressor provides quick and easy maintenance
- Air guard on rear wall ensures proper air circulation and cooling.
- Innovative hot gas frame heating system reduces condensation and increases energy efficiency.
- Unit requires no plumbing to operate
- Front air intake and rear air vent circulation system
- Cases have a temperature range between 38°F ~ 44°F

Lighting

- Interior LED lighting

Standard

- NSF/ANSI Standard 7 compliant

Connection

- 9 ft long flexible three wire cord with molded plug

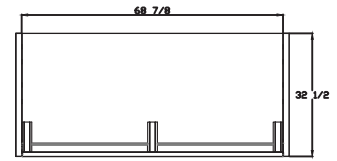
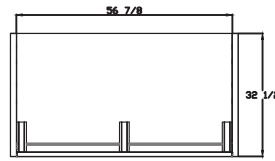
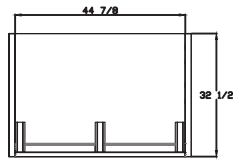
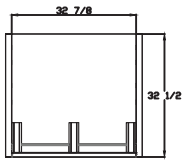
Optional Features & Accessories

- Glass side panel

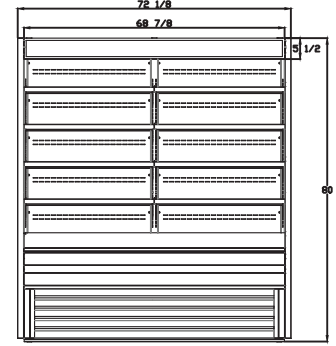
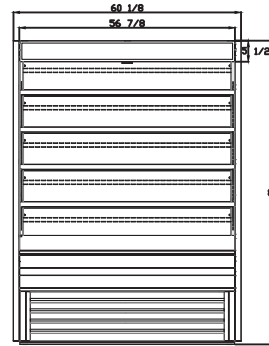
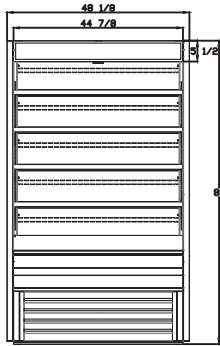
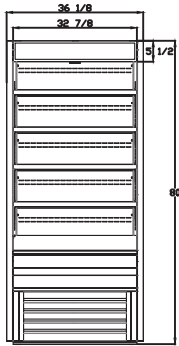
Open Display Case

PRODUCT PLAN VIEW

- Top View -



- Front View -



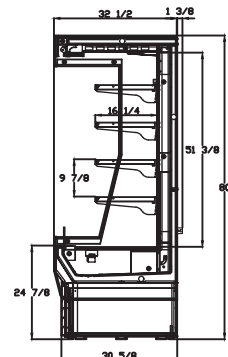
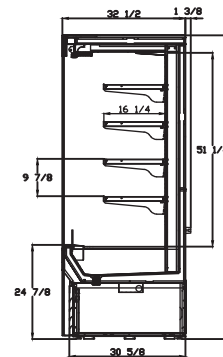
**BOD-36S
BOD-36G**

**BOD-48S
BOD-48G**

**BOD-60S
BOD-60G**

**BOD-72S
BOD-72G**

- Side View -



Solid side panels

Glass side panels

PRODUCT SPECIFICATION

Model	Product Description		Refrigerant	Temperature Range	Easy Maintenance			Cord Length (ft/m)			
	Open Display Case		R-404 A	38°F ~ 44°F	Sliding Condensing Unit			9.8ft (3m)			
	Capacity (Cu.Ft.)	Shelves	Cabinet Dimensions (inches / mm)			HP	Voltage	Amps	NEMA config.	Weight (lbs / kg)	
L			D	H	Net Weight					Ship Weight	
BOD-36S	19.6	4	36 1/8" (918mm)	32 1/2" (826mm)	80" (2032mm)	1	115V / 60Hz	16.5	NEMA 5-20	437 (198)	472 (214)
BOD-48S	26.7	4	48 1/8" (1222mm)	32 1/2" (826mm)	80" (2032mm)	1	115V / 60Hz	16.5	NEMA 5-20	525 (238)	560 (254)
BOD-60S	33.9	4	60 1/8" (1527mm)	32 1/2" (826mm)	80" (2032mm)	1	115V / 60Hz	16.5	NEMA 5-20	591 (268)	633 (287)
BOD-72S	41	8	72 1/8" (1832mm)	32 1/2" (826mm)	80" (2032mm)	1	208-230V / 60Hz	15	NEMA L14-20	743 (337)	791 (359)
BOD-36G	19.6	4	36 1/8" (918mm)	32 1/2" (826mm)	80" (2032mm)	1	115V / 60Hz	16.5	NEMA 5-20	516 (234)	551 (250)
BOD-48G	26.7	4	48 1/8" (1222mm)	32 1/2" (826mm)	80" (2032mm)	1	115V / 60Hz	16.5	NEMA 5-20	602 (273)	637 (289)
BOD-60G	33.9	4	60 1/8" (1527mm)	32 1/2" (826mm)	80" (2032mm)	1	115V / 60Hz	16.5	NEMA 5-20	670 (304)	712 (323)
BOD-72G	41	8	72 1/8" (1832mm)	32 1/2" (826mm)	80" (2032mm)	1	208-230V / 60Hz	15	NEMA L14-20	818 (337)	869 (394)

*BLUE AIR has the right to change specifications without further notice.