



STAINLESS STEEL
WORK TABLES

SUPER SAVER Series - 1 1/2" Splash - UNDERSHELF Style



Item #: _____ Qty #: _____
 Model #: _____
 Project #: _____

FEATURES:

Top is furnished with a 1 5/8" sanitary rolled rim edge on front and square sides, and a 1 1/2" splash of single metal thickness on the rear side.

TWO hat channels stud welded to reinforce and maintain a level working surface. 30" and 36" wide tables supplied with THREE hat channels.

Pre-engineered welded angle adapters insure ease of future drawer installation.

Aluminum die cast 'leg-to-shelf' clamp secures shelf to leg eliminating unsightly nuts and bolts. Undershelf is adjustable.

CONSTRUCTION:

All TIG welded. Exposed weld areas polished to match adjacent surfaces.

Entire top mechanically polished to a satin finish.

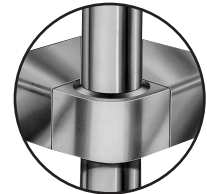
Top is sound deadened.

Roll formed embossed galvanized hat channels are secured to top by means of structural adhesive and weld studs.

Gussets welded to support hat sections.



Rolled Rim Edges on Front and Splash on Back and Square Side Edges



Featuring as Standard:
"THE PROVEN"
 ORIGINAL ADVANCE TABCO
Adjustable Undershelf with Die Cast Leg Clamp

MATERIAL:

SFG-SERIES: Stainless Steel Legs & Undershelf

TOP: 16 gauge stainless steel type "430" series.

SHELF: 18 gauge stainless steel.

LEGS: 1 5/8" diameter tubular stainless steel.
 1" adjustable stainless steel bullet feet.
 Stainless steel gussets.

FAG-SERIES: Galvanized Legs & Undershelf

TOP: 16 gauge stainless steel type "430" series.

SHELF: 18 gauge galvanized steel.

LEGS: 1 5/8" diameter tubular galvanized steel.
 1" adjustable plastic bullet feet.
 Galvanized steel gussets.

**SFG-Series:
 Stainless Steel Legs & Undershelf**

L	24" Wide	30" Wide	36" Wide
30"	SFG-240	SFG-300	
24"	SFG-242	SFG-302	
36"	SFG-243	SFG-303	SFG-363
48"	SFG-244	SFG-304	SFG-364
60"	SFG-245	SFG-305	SFG-365
72"	SFG-246	SFG-306	SFG-366
84"	SFG-247	SFG-307	SFG-367
96"	SFG-248	SFG-308	SFG-368
108"	SFG-249	SFG-309	SFG-369
120"	SFG-2410	SFG-3010	SFG-3610
132"	SFG-2411	SFG-3011	SFG-3611
144"	SFG-2412	SFG-3012	SFG-3612



**FAG-Series:
 Galvanized Steel Legs & Undershelf**

L	24" Wide	30" Wide	36" Wide
30"	FAG-240	FAG-300	
24"	FAG-242	FAG-302	
36"	FAG-243	FAG-303	FAG-363
48"	FAG-244	FAG-304	FAG-364
60"	FAG-245	FAG-305	FAG-365
72"	FAG-246	FAG-306	FAG-366
84"	FAG-247	FAG-307	FAG-367
96"	FAG-248	FAG-308	FAG-368
108"	FAG-249	FAG-309	FAG-369
120"	FAG-2410	FAG-3010	FAG-3610
132"	FAG-2411	FAG-3011	FAG-3611
144"	FAG-2412	FAG-3012	FAG-3612

Create Your Own Efficient Workstation with the Available Standard Accessories (Visit Section



Customer Service Available To Assist You 1-800-645-3166 8:30 am - 7:00 pm E.S.T.

Email Orders To: customer@advancetabco.com. For Smart Fabrication™ Quotes, Email To: smartfab@advancetabco.com or Fax To: 631-586-2933

NEW YORK
 Fax: (631) 242-6900

GEORGIA
 Fax: (770) 775-5625

TEXAS
 Fax: (972) 932-4795

NEVADA
 Fax: (775) 972-1578

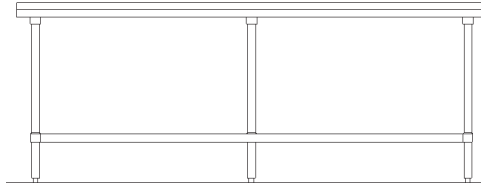
DIMENSIONS and SPECIFICATIONS

ALL DIMENSIONS ARE TYPICAL TOL ± .500"

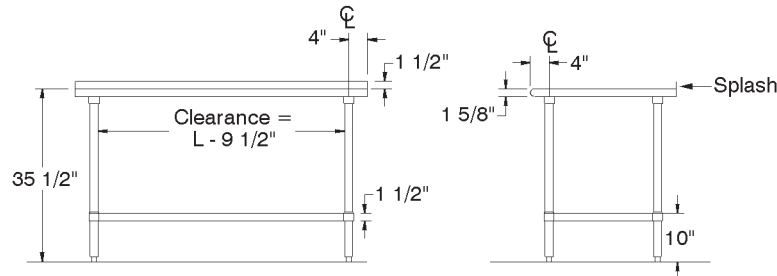
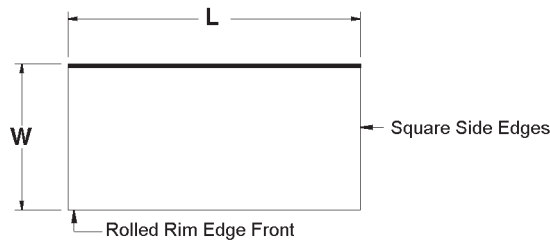
All Units Shipped Unassembled (KD) for Reduced Shipping Costs.

SFG & FAG Series UNDERSHELF Style 1 1/2" Backsplash

Finished size of undershelf = Length minus 5 3/4"
Width minus 5 3/4"



Units 8ft. and larger are furnished with six (6) legs



SFG-Series: Stainless Steel Legs & Undershelf

L	24" Wide	Wt.	30" Wide	Wt.	36" Wide	Wt.
30"	SFG-240	49 lbs.	SFG-300	65 lbs.		
24"	SFG-242	31 lbs.	SFG-302	55 lbs.		
36"	SFG-243	64 lbs.	SFG-303	72 lbs.	SFG-363	88 lbs.
48"	SFG-244	79 lbs.	SFG-304	89 lbs.	SFG-364	98 lbs.
60"	SFG-245	92 lbs.	SFG-305	107 lbs.	SFG-365	118 lbs.
72"	SFG-246	109 lbs.	SFG-306	125 lbs.	SFG-366	138 lbs.
84"	SFG-247	130 lbs.	SFG-307	148 lbs.	SFG-367	164 lbs.
96"	SFG-248	145 lbs.	SFG-308	166 lbs.	SFG-368	184 lbs.
108"	SFG-249	161 lbs.	SFG-309	176 lbs.	SFG-369	190 lbs.
120"	SFG-2410	261 lbs.	SFG-3010	287 lbs.	SFG-3610	308 lbs.
132"	SFG-2411	293 lbs.	SFG-3011	324 lbs.	SFG-3611	358 lbs.
144"	SFG-2412	308 lbs.	SFG-3012	339 lbs.	SFG-3612	373 lbs.

FAG-Series: Galvanized Steel Legs & Undershelf

L	24" Wide	Wt.	30" Wide	Wt.	36" Wide	Wt.
30"	FAG-240	49 lbs.	FAG-300	65 lbs.		
24"	FAG-242	31 lbs.	FAG-302	55 lbs.		
36"	FAG-243	64 lbs.	FAG-303	72 lbs.	FAG-363	88 lbs.
48"	FAG-244	79 lbs.	FAG-304	89 lbs.	FAG-364	98 lbs.
60"	FAG-245	92 lbs.	FAG-305	107 lbs.	FAG-365	118 lbs.
72"	FAG-246	109 lbs.	FAG-306	125 lbs.	FAG-366	138 lbs.
84"	FAG-247	130 lbs.	FAG-307	148 lbs.	FAG-367	164 lbs.
96"	FAG-248	145 lbs.	FAG-308	166 lbs.	FAG-368	184 lbs.
108"	FAG-249	161 lbs.	FAG-309	176 lbs.	FAG-369	190 lbs.
120"	FAG-2410	261 lbs.	FAG-3010	287 lbs.	FAG-3610	308 lbs.
132"	FAG-2411	293 lbs.	FAG-3011	324 lbs.	FAG-3611	358 lbs.
144"	FAG-2412	308 lbs.	FAG-3012	339 lbs.	FAG-3612	373 lbs.

