

Item #: \_\_\_\_\_ Qty #: \_\_\_\_\_  
 Model #: \_\_\_\_\_  
 Project #: \_\_\_\_\_



*Flat Top  
w/ K-50  
Deck Mount  
Faucet Shown*



*10" Backsplash  
w/ K-1  
Splash Mount  
Faucet Shown*

**Includes Faucet & K-6 Basket Drain(s)**

**Flat Top, 1", 1-1/2" & 5 Backsplash Include Deck Mount Faucet**

- Single Sink Bowl provided with K-50 Swing Spout Faucet
- Double Sink Bowls provided with K-53 Swing Spout Faucet

**10" Backsplash Include Splash Mount Faucet**

- Single & Double Sink Bowls provided with K-1 Swing Spout Faucet
- Splash Mount Faucet Available On 5" Backsplash - Add TA-11Z

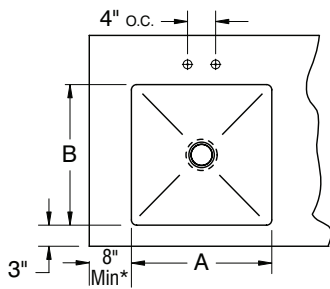
Size		Single Bowl	Double Bowl
A	B	Model#	Model#
10" x 14" x 5"		TA-11Q	TA-11Q-2†
10" x 14" x 10"		TA-11F	TA-11F-2†
14" x 16" x 12"		TA-11J	TA-11J-2
16" x 20" x 8"		TA-11A**	TA-11A-2**
16" x 20" x 12"		TA-11B**	TA-11B-2**
16" x 20" x 14"		TA-11V**	TA-11V-2**
18" x 18" x 14"		TA-11N	TA-11N-2
18" x 24" x 14"		TA-11L	TA-11L-2
20" x 20" x 8"		TA-11C*	TA-11C-2*
20" x 20" x 12"		TA-11D*	TA-11D-2*
20" x 20" x 14"		TA-11W*	TA-11W-2*
20" x 24" x 14"		TA-11P	TA-11P-2
20" x 30" x 14"		TA-11S*	TA-11S-2*
24" x 24" x 14"		TA-11E*	TA-11E-2*
24" x 30" x 14"		TA-11T*	TA-11T-2*
24" x 36" x 14"		TA-11R*	TA-11R-2*
28" x 20" x 12"		TA-11G*	TA-11G-2*

\* Only Installed In Tables 30" Wide or Wider

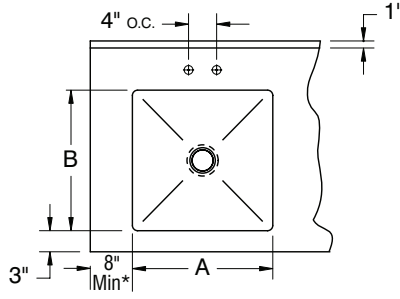
\*\* Bowls Are Turned In 24" Wide Tables

† K-50 Swing Spout Faucet (Double Bowl)

**FLAT TOP, 1" or 1-1/2" REAR SPLASH**

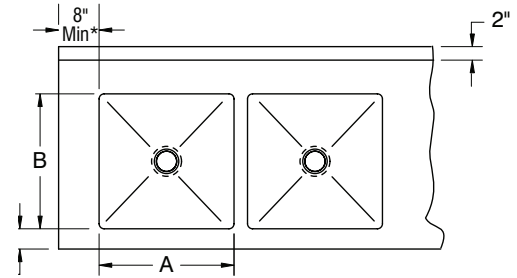


**5" REAR SPLASH with 1" RETURN**



\*4" minimum on enclosed base tables

**10" REAR SPLASH with 2" RETURN**



**WARNING:** Equipment that include faucets on this page may contain a chemical known to the State of California to cause cancer, birth defects or other reproductive harm.

## Faucets & Accessories

_____	<b>K-2B</b>	Poly-Vance Sink Cutting Board for 14" x 16" Bowls
_____	<b>K-2C</b>	Poly-Vance Sink Cutting Board for 16" x 20" Bowls
_____	<b>K-2D</b>	Poly-Vance Sink Cutting Board for 18" x 24" Bowls
_____	<b>K-2E</b>	Poly-Vance Sink Cutting Board for 20" x 20" Bowls
_____	<b>K-2F</b>	Poly-Vance Sink Cutting Board for 24" x 24" Bowls
_____	<b>K-2J</b>	Poly-Vance Sink Cutting Board for 18" x 18" Bowls
_____	<b>K-4</b>	Lever Drain Bracket
_____	<b>K-5</b>	Lever Drain
_____	<b>K-12</b>	Deck Mounted Soap Dispenser
_____	<b>K-15</b>	Lever Drain With Overflow
_____	<b>K-50</b>	8" Deck Mounted 4" O.C. Swing Spout Faucet
_____	<b>K-50OMIT</b>	Omit Swing Spout
_____	<b>K-52</b>	3 1/2" Spout Deck Mounted 4" O.C. Gooseneck Faucet
_____	<b>K-52OMIT</b>	Omit Swing Spout Gooseneck Faucet
_____	<b>K-53</b>	12" Deck Mounted 4" O.C. Swing Spout Faucet
_____	<b>K-54</b>	8-1/4" Water Filler Faucet
_____	<b>K-54A</b>	12" Water Filler Faucet

_____	<b>K-55</b>	8 1/2" Spout 4" O.C. Deck Mounted Gooseneck Faucet
_____	<b>K-60</b>	4" O.C. Splash Mounted Gooseneck Faucet
_____	<b>K-62</b>	X.H.D. 4" O.C. Deck Mounted Gooseneck Faucet
_____	<b>K-105</b>	14" Splash Mounted 8" O.C. Faucet
_____	<b>K-112</b>	Extra Heavy Duty 12" Splash Mounted Faucets
_____	<b>K-316-LUHA</b>	Wrist Handles For Splash Mounted Faucets
_____	<b>K-350</b>	Residential Finish & Packaging
_____	<b>K-452</b>	6" x 9" Control Bracket
_____	<b>K-453</b>	14" x 16" Control Bracket
_____	<b>K-460</b>	Installation Of Disposal Cone w/ 6" x 9" Control Bracket
_____	<b>K-461</b>	Installation Of Collar w/ 6" x 9" Control Bracket
_____	<b>K-470</b>	14" Deep Bowls
_____	<b>K-472</b>	Faucet Hole Revision
_____	<b>DTA-100</b>	Prerinse Basket for 20" x 20" Bowls
_____	<b>DTA-125</b>	Prerinse Basket for 16" x 20" Bowls