

## Open Merchandisers 30E Series - 44" High Endless Design - Multi-Purpose



Model No.	Description	Length	Depth	Height	Voltage	Amps	HP/BTUs	Power Cord	Est. Ship Weight
<b>SC-OS30E-3C</b>	Self contained Curved Plexi	39	30"	44"	115	12.0	1/2	5-15P	445
<b>SC-OS30E-4C</b>	Self contained Curved Plexi	51	30"	44"	115	13.1	1/2	5-20P	475
<b>SC-OS30E-5C</b>	Self contained Curved Plexi	63	30"	44"	115	16.0	3/4	5-20P	500
<b>SC-OS30E-6C</b>	Self contained Curved Plexi	75	30"	44"	115	16.0	3/4	5-20P	525
<b>SC-OS30E-3</b>	Self contained Straight Plexi	39	30"	44"	115	12.0	1/2	5-15P	445
<b>SC-OS30E-4</b>	Self contained Straight Plexi	51	30"	44"	115	13.1	1/2	5-20P	475
<b>SC-OS30E-5</b>	Self contained Straight Plexi	63	30"	44"	115	16.0	3/4	5-20P	500
<b>SC-OS30E-6</b>	Self contained Straight Plexi	75	30"	44"	115	16.0	3/4	5-20P	525
<b>R-OS30E-3C</b>	Remote Curved Plexi	39	30"	44"	115	0.7	3100	NO	401
<b>R-OS30E-4C</b>	Remote Curved Plexi	51	30"	44"	115	1.4	4133	NO	428
<b>R-OS30E-5C</b>	Remote Curved Plexi	63	30"	44"	115	1.4	5165	NO	450
<b>R-OS30E-6C</b>	Remote Curved Plexi	75	30"	44"	115	1.4	6200	NO	473
<b>R-OS30E-3</b>	Remote Straight Plexi	39	30"	44"	115	0.7	3100	NO	401
<b>R-OS30E-4</b>	Remote Straight Plexi	51	30"	44"	115	1.4	4133	NO	428
<b>R-OS30E-5</b>	Remote Straight Plexi	63	30"	44"	115	1.4	5165	NO	450
<b>R-OS30E-6</b>	Remote Straight Plexi	75	30"	44"	115	1.4	6200	NO	473

MODEL NUMBER PREFIX - SC = Self Contained R = Remote  
 MODEL NUMBER SUFFIX - W = White B = Black S = Stainless Steel LED = LED lighting  
 • Cases are designed to operate at 75 degrees Fahrenheit and 55% relative humidity  
 • Cases are equipped with drains; check your local building codes for connection requirements.  
 • Self-contained cases do not require drain connect.  
 • Specification subject to change without notice  
 IF COLORS ARE MIXED AN ADDITIONAL CHARGE WILL APPLY



## Open Merchandisers 30E Series – 44" High – Endless Design - Multi-Purpose

### Standard Specifications and Optional Features

#### CONSTRUCTION

- UL Classified to ANSI/NSF 7
- Foamed in place CFC free foam
- Heavy gauge steel super structure
- Endless design allows for continuous line up

#### INTERIOR

- White, black, or stainless steel end panels
- Removable white, black, or stainless steel floor pans
- White, black, or stainless steel perforated rear wall (for even air distribution)
- Step shelves
- Electric condensate pan - 200 Watt

#### EXTERIOR

- White, black, or stainless steel ends and front
- White, black, or stainless steel color band
- Removeable front grill allows for cleaning and servicing
- 1" bumper
- Choice of end panels Curved or Straight plexi
- Night cover standard

#### FINISHES

- White, black, or stainless steel end panels
- White, black, or stainless steel front rail
- White, black, or stainless steel front color band
- White, black, or stainless steel end trim
- Laminate, and custom paints available

#### ELECTRICAL REQUIREMENTS

- Cord and Plug
- 3' 115V, 5-15P
- 4', 5', 6' 115V, 5-20P
- See Tech page for details on voltage

#### REFRIGERATION

- Self Contained - R513A expansion valve system
- Remote - R448A expansion valve system
- Low velocity fans located below deck area (to insure even flow of air)
- Electronic Control System with automatic air defrost to Maintain Balanced Temperatures
- New high efficiency air screen technology
- Self contained system
- Copeland hermetic unit
- Remotes available

#### OPTIONAL FEATURES

- LED lights at top of the unit
- Security cover (Straight)
- Insulated divider for line ups
- Plexiglas divider for line ups
- Stainless steel, laminated or paint
- Colored bumper
- 2 Different end panel choices
- Digital thermometer

#### *Important Note:*

*All refrigerated cases are designed to operate in an environment of 75 degrees and 55% relative humidity.*

*Product must be cooled before being displayed within the case.*

*Self-Contained Cases do not require drain connect.*

## Open Merchandisers 30E Series – 44" High – Endless Design - Multi-Purpose

### Technical Data

Straight Sides Model No.	SC R	SC-OS30E-3 R-OS30E-3	SC-OS30E-4 R-OS30E-4	SC-OS30E-5 R-OS30E-5	SC-OS30E-6 R-OS30E-6
Curved Sides Model No.	SC R	SC-OS30E-3C R-OS30E-3C	SC-OS30E-4C R-OS30E-4C	SC-OS30E-5C R-OS30E-5C	SC-OS30E-6C R-OS30E-6C
Length with (2) ends		39"	51"	63"	75"
Length without ends		36"	48"	60"	72"
Height with ends		44"	44"	44"	44"
Height without ends		43-7/8"	43-7/8"	43-7/8"	43-7/8"
Depth with ends		30"	30"	30"	30"
Depth without ends		29"	29"	29"	29"
Endless design		YES	YES	YES	YES
(Dimensions are +/- 1/4")					
Operating temperature		36°F to 40°F	36°F to 40°F	36°F to 40°F	36°F to 40°F
Refrigerant (expansion valve)	SC	R513A	R513A	R513A	R513A
Refrigerant (expansion valve)	R	R448A	R448A	R448A	R448A
Compressor size HP	SC	1/2	1/2	3/4	3/4
Defrost per day (24 hours)	Air Defrost	6 per day	6 per day	6 per day	6 per day
BTU's at +20°F Evap. Temp.	R	3100	4133	5165	6200
Voltage	SC	115	115	115	115
Amperage	SC	12.0	13.1	16.0	16.0
Remote Voltage	R	115	115	115	115
Amperage, fans only	R	0.7	1.4	1.4	1.4
Cord and plug	SC	5-15P	5-20P	5-20P	5-20P
	R	NO	NO	NO	NO
Exterior color		W, B, S	W, B, S	W, B, S	W, B, S
Interior color		W, B, S	W, B, S	W, B, S	W, B, S
# of shelves		1	1	1	1
Shelves		Step shelf (2) 7" depth	Step shelf (2) 7" depth	Step shelf (2) 7" depth	Step shelf (2) 7" depth
Shipping Info					
Height		49"	49"	49"	49"
Depth		44"	44"	44"	44"
Length		49"	61"	72"	87"
Gross weight SC / R		445/401	475/428	500/450	525/473
Cubic feet		61	76	91	108

(ALL WHITE OR ALL BLACK, NO EXTRA CHARGE—IF COLORS ARE MIXED AN ADDITIONAL CHARGE WILL APPLY)

#### Prefix

SC = Self Contained  
R = Remote

#### Suffix

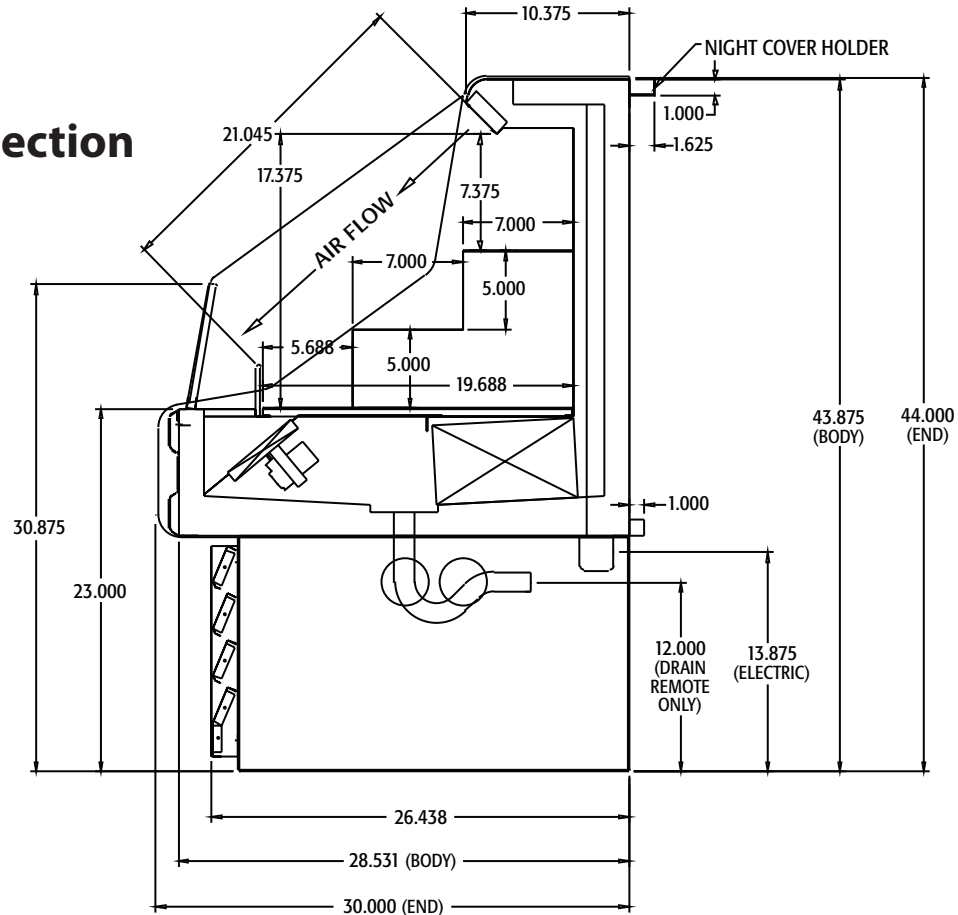
B = Black  
W = White  
S = Stainless Steel  
LED = LED lighting

- Cases are designed to operate at 75 degrees Fahrenheit and 55% relative humidity
- Cases are equipped with drains; check your local building codes for connection requirements.
- Self-contained cases do not require drain connect.
- Specification subject to change without notice

## Open Merchandisers 30E Series – 44" High – Endless Design - Multi-Purpose

### Technical Data • Cross Section • Plan View

#### Cross Section



#### Plan View

