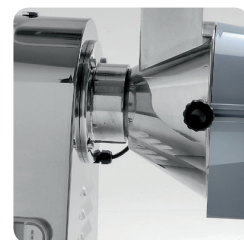


MADE IN ITALY



- Professional equipment
- Ideally suited for pizza shops and restaurants
- Stiffened structure made from AISI 304 s/steel
- Oil immersed gears reducer
- Italian made heavy duty asynchronous motor
- Thermal overload protection included
- ABS discharging chute equipped with safety micro switch
- Stainless steel cutting cones
- Different cutting cones dimensions
- S/steel hopper and tray
- 4 cones discs included

## SPECIFICATIONS

Voltage	110V / 60Hz
Motor Power	1 HP
Grater RPM	1400 RPM
Production per hour	110 lbs
Net weight	40 lbs
Product Dimensions	16-1/2" (A) x 8-5/8" (B) x 17-1/4" (C)
Shipping Weight	45 lbs
Shipping Dimensions	18" x 11-7/8" x 20-7/8"

