



STAINLESS STEEL OPEN BASE STYLE ENCLOSED BASE WORK TABLES



Flat Top



1 1/2" Backsplash



5" Backsplash



FEATURING BOLT-ON
STAINLESS STEEL LEG

Item #: _____ Qty #: _____
 Model #: _____
 Project #: _____

FEATURES:

FLAT TOP is furnished with a 1 5/8" sanitary rolled rim on the front and 1 5/8" square bend edges on the 2 sides and rear.

1 1/2" SPLASH is furnished with a 1 5/8" sanitary rolled rim on the front side and 1 5/8" square bend edges on the 2 sides and a 1 1/2" splash of single metal thickness on the rear side.

5" SPLASH is furnished with a 1 5/8" sanitary rolled rim on the front side and 1 5/8" square bend edges on the 2 sides and a 5" splash with a 1" return on the rear side.

Rear flush panel along the rear of the base unit.

CONSTRUCTION:

All TIG welded. Exposed areas finished to match adjacent surfaces.

Entire Top is mechanically polished to a satin finish and is sound deadened.

Hat section secured to Top reinforces and maintains level working surface.

UNI-BODY DESIGN sides, back and fixed mid shelf (sold separately) are welded to form a single rigid structure.

Legs bolt on to table base.

MATERIAL:

TOP is 14 gauge stainless steel type "304" series with galvanized understructure.

BODY is 18 gauge stainless steel type "430" series.

LEGS are stainless steel and include 1 1/2" adjustable hex foot.

| | L | FLAT TOP | 1 1/2" SPLASH | 5" SPLASH | Approx. Wt. | Approx. Cu. Ft. |
|----------|------------|------------|---------------|------------|-------------|-----------------|
| 24" WIDE | 36" | EB-SS-243 | EF-SS-243 | EK-SS-243 | 135 lbs. | 30 |
| | 48" | EB-SS-244 | EF-SS-244 | EK-SS-244 | 170 lbs. | 38 |
| | 60" | EB-SS-245 | EF-SS-245 | EK-SS-245 | 205 lbs. | 47 |
| | 72" | EB-SS-246 | EF-SS-246 | EK-SS-246 | 242 lbs. | 56 |
| | 84" | EB-SS-247 | EF-SS-247 | EK-SS-247 | 282 lbs. | 66 |
| | 96" | EB-SS-248 | EF-SS-248 | EK-SS-248 | 317 lbs. | 74 |
| | 108" | EB-SS-249 | EF-SS-249 | EK-SS-249 | 360 lbs. | 83 |
| | 120" | EB-SS-2410 | EF-SS-2410 | EK-SS-2410 | 400 lbs. | 92 |
| 30" WIDE | 144" | EB-SS-2412 | EF-SS-2412 | EK-SS-2412 | 470 lbs. | 109 |
| | 36" | EB-SS-303 | EF-SS-303 | EK-SS-303 | 145 lbs. | 35 |
| | 48" | EB-SS-304 | EF-SS-304 | EK-SS-304 | 182 lbs. | 45 |
| | 60" | EB-SS-305 | EF-SS-305 | EK-SS-305 | 220 lbs. | 55 |
| | 72" | EB-SS-306 | EF-SS-306 | EK-SS-306 | 260 lbs. | 66 |
| | 84" | EB-SS-307 | EF-SS-307 | EK-SS-307 | 315 lbs. | 76 |
| | 96" | EB-SS-308 | EF-SS-308 | EK-SS-308 | 358 lbs. | 87 |
| | 108" | EB-SS-309 | EF-SS-309 | EK-SS-309 | 400 lbs. | 97 |
| 36" WIDE | 120" | EB-SS-3010 | EF-SS-3010 | EK-SS-3010 | 440 lbs. | 107 |
| | 144" | EB-SS-3012 | EF-SS-3012 | EK-SS-3012 | 518 lbs. | 128 |
| | 36" | EB-SS-363 | EF-SS-363 | EK-SS-363 | 160 lbs. | 41 |
| | 48" | EB-SS-364 | EF-SS-364 | EK-SS-364 | 206 lbs. | 53 |
| | 60" | EB-SS-365 | EF-SS-365 | EK-SS-365 | 252 lbs. | 65 |
| | 72" | EB-SS-366 | EF-SS-366 | EK-SS-366 | 297 lbs. | 77 |
| | 84" | EB-SS-367 | EF-SS-367 | EK-SS-367 | 342 lbs. | 90 |
| | 96" | EB-SS-368 | EF-SS-368 | EK-SS-368 | 440 lbs. | 102 |
| 108" | EB-SS-369 | EF-SS-369 | EK-SS-369 | 490 lbs. | 114 | |
| 120" | EB-SS-3610 | EF-SS-3610 | EK-SS-3610 | 540 lbs. | 126 | |
| 144" | EB-SS-3612 | EF-SS-3612 | EK-SS-3612 | 640 lbs. | 151 | |

Mid Shelves Are Available.

To Add a Fixed Mid Shelf, Add "M" After each Model Number.
 Upgrade to Adjustable Mid Shelf. Add TA-116.



Customer Service Available To Assist You 1-800-645-3166 8:30 am - 8:00 pm E.S.T.

For Orders & Customer Service:

Email: customer@advancetabco.com or Fax: 631-242-6900

For Smart Fabrication™ Quotes:

Email: smartfab@advancetabco.com or Fax: 631-586-2933

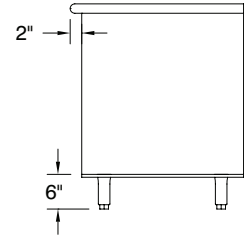
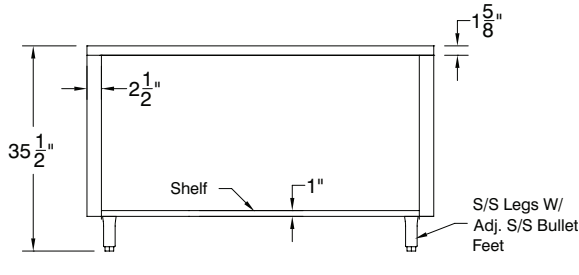
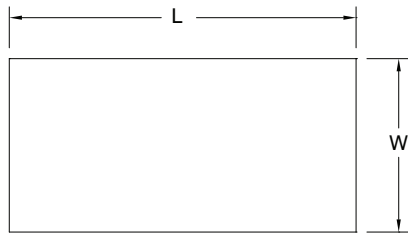
DETAILS and SPECIFICATIONS

TOL ± .500"

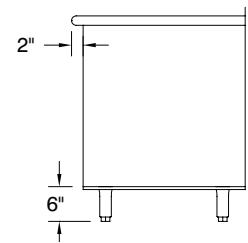
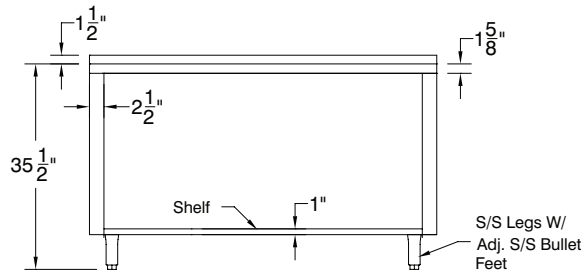
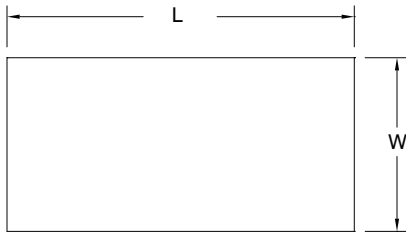
Units 7' and larger are furnished with 6 legs.

ALL DIMENSIONS ARE TYPICAL

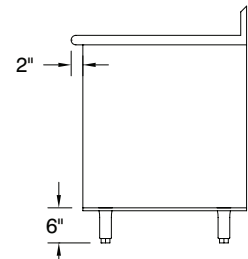
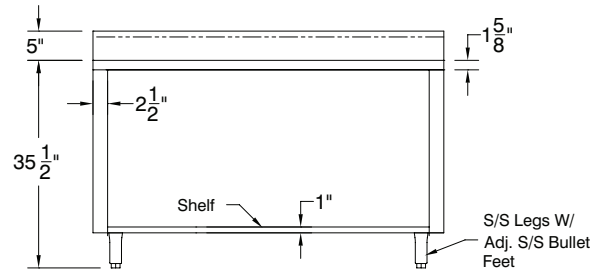
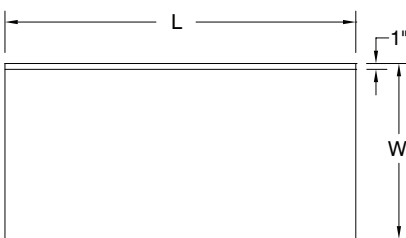
EB-Series Flat Top



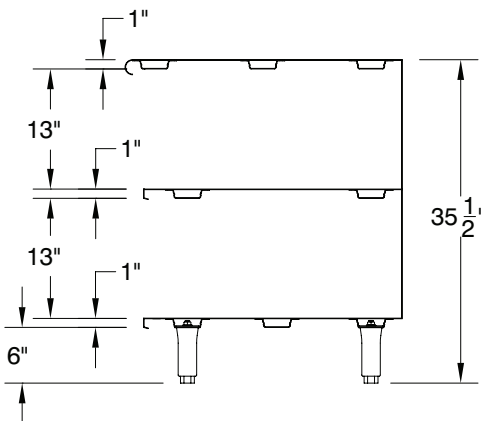
EF-Series 1 1/2" Rear Splash



EK-Series 5" Rear Splash

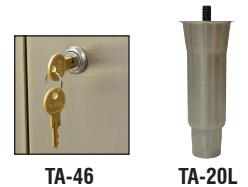


OPTIONAL MID SHELF DETAILS



OPTIONAL ENCLOSED BASE MODIFICATIONS & ACCESSORIES

- **TA-19L** Replacement Bolt-on Leg With Flanged Bullet Foot
- **TA-20L** Replacement Bolt-on Leg
- **TA-42** Interior Partition, 2-1/2" x 30" (each)
- **TA-46** Door Locks
- **TA-54** Removable Kick Plate
- **TA-116** Cabinet Mid Shelf* (Sold Separately)
- **TA-118** Partial Mid Shelf (Sold Separately)
- **TA-255P** 5" Heavy Duty Polyurethane Casters (Set of 4 - 2 w/ Brakes)
- **TA-255AP** 5" Heavy Duty Polyurethane Casters (Set of 6 - 2 w/ Brakes)



*Shelves Over 36" In Length Require Multiple Sections With Center Partition.

