

## TOP MODIFICATIONS



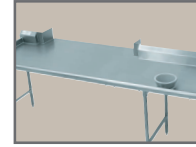
**TA-56**  
5" NSF Partition



**TA-523**  
Drop-In Urn Trough



**CDR-5**  
Condiment Holder



**TA-84**  
Pass-Thru



**TA-108**  
Grommet For Cords

**QTY.**

_____	<b>CDR-5</b>	Condiment Holder (Accommodates 5 Bins)
_____	<b>TA-1</b>	Notch Backsplash For Roll Up Door w/ Pass-Thru
_____	<b>TA-3</b>	Stainless Steel Hat Channel & Gusset Upgrade
_____	<b>TA-7</b>	10" Partial Splash
_____	<b>TA-8</b>	Column Notch in Rear Splash (Includes Splash)
_____	<b>TA-10</b>	5" Partial Splash
_____	<b>TA-12</b>	Countertop Edge
_____	<b>TA-22</b>	Square Edge Table
_____	<b>TA-28</b>	Cut-Out For Cold Well. Includes Louvered Doors
_____	<b>TA-29</b>	16 Ga. 304 Rear Splash Capping Strip w/Adhesive Backing
_____	<b>TA-30</b>	1-1/2" Side Splash
_____	<b>TA-30A</b>	1-1/2" Turn Up For Table Tops
_____	<b>TA-31</b>	5" Side Splash
_____	<b>TA-32</b>	10" Side Splash
_____	<b>TA-34</b>	Top Cut-Out
_____	<b>TA-34A</b>	Top Cut-Out for Undermount Well
_____	<b>TA-35</b>	Splash Cut-Out
_____	<b>TA-41</b>	Poly-Vance 5/8" Cutting Board
_____	<b>TA-56</b>	5" NSF Partition
_____	<b>TA-56A</b>	18" NSF Partition
_____	<b>TA-57</b>	Prepare Welded Field Joint (Welded in field by others)
_____	<b>TA-57A</b>	Bolted Field Joint (Bolted in field by others)
_____	<b>TA-57B</b>	Hairline Field Joint
_____	<b>TA-58</b>	Stepdown to 24" Working Height
_____	<b>TA-64</b>	Urn Trough (Factory installation only)
_____	<b>TA-75</b>	Mitered Edge
_____	<b>TA-76</b>	Paint on Sound Deadening
_____	<b>TA-79</b>	Flour Trough (Factory installation only)
_____	<b>TA-82</b>	Scrap Chute (6" dia. opening)
_____	<b>TA-84</b>	Simple Pass-Thru
_____	<b>TA-87</b>	Enclosed Rear Splash
_____	<b>TA-91</b>	Poly Retaining Clips Includes TA-22 (S/S top table)

**QTY.**

_____	<b>TA-93</b>	Wall Brackets (Includes 2. For 5" & 10 1/2" splash only)
_____	<b>TA-96A</b>	Can Opener Provision for Openers with Bolt-on Base (Customer to provide location)
_____	<b>TA-96B</b>	Can Opener Surface Mount Provision with 4" S/S Tube for Openers w/o Base (Customer to provide location)
_____	<b>TA-96C</b>	Can Opener Spacer Plate Provision for Use on Tables With Countertop Edge & Can Opener Base (Customer to provide location)
_____	<b>TA-100</b>	Bull Nose All Sides of Worktable
_____	<b>TA-101</b>	Rear Tray Lock
_____	<b>TA-106</b>	Mirror HI-LITE Edge
_____	<b>TA-107</b>	Vacuum Breaker Holes on Tables (Includes Backsplash with 2" Return)
_____	<b>TA-108</b>	2" Hole with Grommet for Appliance Cord
_____	<b>TA-112</b>	Hubble Outlet
_____	<b>TA-113</b>	Notch Top for Buyout Unit
_____	<b>TA-130</b>	Cutlery Dispenser Holder (Undercounter Mounted)
_____	<b>TA-135</b>	Plate Shelf (Undercounter Mounted)
_____	<b>TA-366A</b>	Heavy duty Understructure Top
_____	<b>TA-502</b>	Install Advnace Tabco Hot Food Unit In Work Table Top (Requires TA-34 Top Cut-Out & TA-27 Control Panel. Does not include wiring. Consult factory)
_____	<b>TA-521</b>	Drop-In urn Trough 1'
_____	<b>TA-522</b>	Drop-In urn Trough 2'
_____	<b>TA-523</b>	Drop-In urn Trough 3'
_____	<b>TA-524</b>	Drop-In urn Trough 4'
_____	<b>TA-525</b>	Drop-In urn Trough 5'
_____	<b>TA-526</b>	Drop-In urn Trough 6'
_____	<b>TA-527</b>	Drop-In urn Trough 7'
_____	<b>TA-528</b>	Drop-In urn Trough 8'
_____	<b>TA-529</b>	Drop-In urn Trough 9'
_____	<b>TA-550</b>	Install Customer Supplied Buyout Items (Does not include wiring. Consult factory)
_____	<b>TA-551</b>	Installation of Hot Food Wells. (Requires TA-34 Top Cut-Out & TA-27 Control Panel. Does not include wiring. Consult factory)

# TABLE MODIFICATIONS & ACCESSORIES

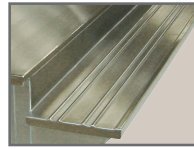
## BASE MODIFICATIONS



**TA-39**  
Louvered Hinged Doors



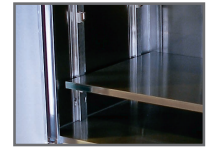
**TA-73**  
Drop-Down Tray Slide



**TA-74**  
Solid Tray Slide



**TA-900**  
ADJ. Height Tables



**TA-116**  
Adj. Mid-Shelf

**QTY.**

___	<b>TA-4</b>	Removable Access Panel
___	<b>TA-4A</b>	Louvered Panel
___	<b>TA-5</b>	Curb Mounting Provision
___	<b>TA-15</b>	Provision for Built In Drawer Warmer
___	<b>TA-23</b>	Welded Set-Up Table/Crating
___	<b>TA-24</b>	Shell Crating
___	<b>TA-27</b>	Control Panel (Must add TA-34A or TA-34B)
___	<b>TA-36A</b>	Sliding/Hinge Stainless Steel Doors
___	<b>TA-36B</b>	1/2 Height Stainless Steel Hinge Doors
___	<b>TA-36C</b>	Hinged door with Trash Flap
___	<b>TA-37</b>	Stainless Enclosed Base
___	<b>TA-39</b>	24" Louvered Hinged Doors
___	<b>TA-40</b>	Remove Undershef in Cabinet Base For Slide in Buyout
___	<b>TA-42</b>	Interior Partition (2.5"x30")
___	<b>TA-43</b>	Filler Panel (3"x30" with Flanged Feet)
___	<b>TA-44</b>	K.D. Aluminum Pan Rack Slides (6 slides. Table min. lgth. 30")
___	<b>TA-45</b>	K.D. Aluminum Glass Rack Slides (3 slides. Table min. lgth. 3 feet)
___	<b>TA-46</b>	Door Locks

**QTY.**

___	<b>TA-48</b>	12"x12" Cut-Out in Back Panel/Undershef for Plumbing
___	<b>TA-54</b>	Removable Kick Plate
___	<b>TA-55</b>	Remove Back Panel (on Enclosed Base)
___	<b>TA-63</b>	Removable Shelving (In addition to standard shelf & table width)
___	<b>TA-70</b>	S/S Tubular Tray Divider (12" sections)
___	<b>TA-73</b>	Tubular Tray Slide w/Dropdown (Stationary Tray Slide Available. Factory installation only)
___	<b>TA-74</b>	Solid Tray Slide
___	<b>TA-92</b>	12" Apron (in front of sink)
___	<b>TA-92A</b>	17" Stainless Steel Apron to Cover Sink Bowls and Support Lever Drain Handles
___	<b>TA-116</b>	Adjustable Enclosed Base Cabinet Mid Shelf- Add to Price of Enclosed Base Table with Fixed Mid Shelf (M). Shelves Over 36" In Length Require Multiple Sections With Center Partition. For Partial Shelves Add To Price Of Shelf.
___	<b>TA-130</b>	Cutlery Dispenser Holder (Undercounter Mounted)
___	<b>TA-135</b>	Plate Shelf (Undercounter Mounted)
___	<b>TA-205</b>	Connect Cafeteria Items (Per Joint Between 2 Tables. Requires Casters)
___	<b>TA-900</b>	Upgrade Table To be Height Adjustable In Field (Up to 6" Only. Unit Ships Set Up)

## ELECTRICAL & DATA PORT OUTLETS



**TA-62**  
Duplex Outlet



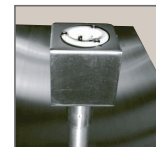
**TA-62A**  
GFI Duplex Outlet



**TA-62D**  
GFI Doghouse Outlet



**TA-62F**  
Empty Junction Box



**TA-112**  
Hubble Outlet

**QTY.**

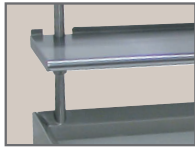
___	<b>TA-62</b>	Standard Duplex Electrical Outlet & Cover Plate (Under Flat Top). NEMA 5-15R
___	<b>TA-62A</b>	GFI Duplex Outlet & Cover Plate in a VKS Splash. NEMA 5-20R
___	<b>TA-62C</b>	GFI Duplex Outlet & Cover Plate Below Shelf Top. NEMA 5-20R
___	<b>TA-62D</b>	GFI Duplex Outlet & Cover Plate in a Doghouse. NEMA 5-20R

**QTY.**

___	<b>TA-62E</b>	Upgrade Outlet to a NEMA 6-20R or Equiv.
___	<b>TA-62F</b>	Junction Box (empty) Below Table Top. Includes 1 Gang Size, Stainless Steel Face Plate
___	<b>TA-112</b>	Hubble Outlet
___	<b>TA-622</b>	CAT-5 Data Port Outlet. Cable Not Included

# TABLE MODIFICATIONS & ACCESSORIES

## OVERSHELF & POT RACK MODIFICATIONS



**TA-9A**  
1" Turn Up



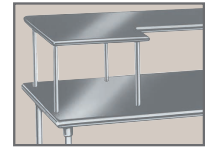
**TA-22A**  
Square Edge



**TA-71**  
Heat Lamp Mounting Provision



**TA-100A**  
Bull Nose



**TA-102**  
24" x 24" Extension

**QTY.**

- \_\_\_\_\_ **TA-9A** Partial 1" Turn-Up for all Table Mt. Shelves
- \_\_\_\_\_ **TA-22A** Square Edge on Overshelf
- \_\_\_\_\_ **TA-26-10** Welded Wall Shelf Brackets for 10" Wide Shelf
- \_\_\_\_\_ **TA-26-12** Welded Wall Shelf Brackets for 12" Wide Shelf
- \_\_\_\_\_ **TA-26-15** Welded Wall Shelf Brackets for 15" Wide Shelf
- \_\_\_\_\_ **TA-26-18** Welded Wall Shelf Brackets for 18" Wide Shelf
- \_\_\_\_\_ **TA-47** Shelf Mounting Bracket for Existing Table
- \_\_\_\_\_ **TA-49** Wall Shelf 2" Offset
- \_\_\_\_\_ **TA-60** Special Sizing Charge for Shelves (Must Order Larger Unit to be Cut Down to Smaller Size)
- \_\_\_\_\_ **TA-71** Heat Lamp Mounting Provision
- \_\_\_\_\_ **TA-71A** Heat Lamp Remote Control Bracket
- \_\_\_\_\_ **TA-78** Additional Lin. Ft. Past 12' For Table Mt. Shelf (For ODS, OTS, TS, DS & WS Shelving only)
- \_\_\_\_\_ **TA-77** Check Minder Shelf Provision (Factory install only)
- \_\_\_\_\_ **TA-83** Spice Bins

**QTY.**

- \_\_\_\_\_ **TA-84A** Knife Rack for Rolled Rim Tables
- \_\_\_\_\_ **TA-84B** Knife Rack for Poly Top Tables
- \_\_\_\_\_ **TA-84C** Knife Rack for Square Edge Tables
- \_\_\_\_\_ **TA-86** Stainless Steel Pot Hooks
- \_\_\_\_\_ **TA-89** Double Sided Plated Pot Hooks (Package of 4)
- \_\_\_\_\_ **TA-89A** Single Sided Plated Pot Hooks (Package of 4)
- \_\_\_\_\_ **TA-98** Stainless Steel Flat Bar in lieu of Chain
- \_\_\_\_\_ **TA-99** 16 Ga. S/S 304 Upgrade for Wall & Over Shelves
- \_\_\_\_\_ **TA-100A** Bull Nose All Sides of Shelf
- \_\_\_\_\_ **TA-100R** Bull Nose Three Sides of Shelf w/ Rear Turn Up
- \_\_\_\_\_ **TA-102** 24" x 24" Extension for Microwave or Computer Shelf (Add to OTS and ODS Shelves. See page 65)
- \_\_\_\_\_ **TA-103** 24" Wide PT Shelf (36" Min Length. Mid mount only. PT Series Shelf, See Pg. 73. Add to 18" Wide Shelf)
- \_\_\_\_\_ **TA-104** Additional Length Over 12' (Add to 18" Shelf. (PA & CU Shelving Only. Max. Length is 14' as Single Piece)

## UNDERSHELF MODIFICATIONS

**QTY.**

- \_\_\_\_\_ **TA-9** 1-1/2" Turn-Up for Undershelves
- \_\_\_\_\_ **TA-17** Upgrade Undershelf to a Marine Edge (Must add TA-23)
- \_\_\_\_\_ **TA-48** 12"x12" Cut-Out in Back Panel or Undershelf for Plumbing

**QTY.**

- \_\_\_\_\_ **TA-94** Upgrade 16 Ga. 304 S/S Undershelf
- \_\_\_\_\_ **TA-94A** Upgrade 14 Ga. 304 S/S Undershelf
- \_\_\_\_\_ **TA-366** Reinforced Understructure For Undershelves

## SIZE MODIFICATIONS

**QTY.**

- \_\_\_\_\_ **TA-33** Special Working Height
- \_\_\_\_\_ **TA-59** 36" Wide Equipment Stand
- \_\_\_\_\_ **TA-6** Extra Length for Standard Tables Over 12' (Tables Over 14' Require Field Joint TA-57)
- \_\_\_\_\_ **TA-61** Special Sizing Charge (Larger Unit Cut Down to Smaller Size)
- \_\_\_\_\_ **TA-61A** Special Modification Charge

**QTY.**

- \_\_\_\_\_ **TA-65** Enclosed Base Units Over 12' (Open Base Table)
- \_\_\_\_\_ **TA-66** Enclosed Base Units Over 12' (Sliding Door Units)
- \_\_\_\_\_ **TA-67** Enclosed Base Units Over 12' (Hinged Door Units)
- \_\_\_\_\_ **TA-105** Modify Enclosed Base Table w/ Drawers to 24" Width
- \_\_\_\_\_ **TA-110** Modify Enclosed Base Table w/ Drawers to 36" Width

# TABLE MODIFICATIONS & ACCESSORIES

## LEG MODIFICATIONS

QTY.		QTY.	
_____	<b>TA-16</b> 1 Galvanized Leg with Plastic Bullet Foot (34 1/2" Total Length)	_____	<b>TA-20-6</b> 6 Stainless Steel Leg with S/S Bullet Feet (34 1/2" Total Length)
_____	<b>TA-16-4</b> 4 Galvanized Legs with Plastic Bullet Feet (34 1/2" Total Length)	_____	<b>TA-20L</b> Replacement Bolt-on Leg For Enclosed Base Table
_____	<b>TA-16-6</b> 6 Galvanized Legs with Plastic Bullet Feet (34 1/2" Total Length)	_____	<b>TA-21</b> Stainless Steel Bullet Foot
_____	<b>TA-19</b> Stainless Steel Flanged Bullet Foot For Work Table	_____	<b>TA-68</b> Relocate Rear Cross Rail To Center (for Open Base Tables Only)
_____	<b>TA-19L</b> S/S Bolt-on Leg w/ Flanged Foot For Enclosed Base Table	_____	<b>TA-72</b> Leg to Wall Brace (Set per table)
_____	<b>TA-20</b> 1 Stainless Steel Leg with S/S Bullet Foot (34 1/2" Total Length)	_____	<b>TA-95</b> Upgrade 16 Ga. 304 S/S Legs Only
_____	<b>TA-20-4</b> 4 Stainless Steel Leg with S/S Bullet Feet (34 1/2" Total Length)		

## WORK TABLE CASTERS



### Standard Casters

Maintains the Standard 35-1/2" Working Height

200 lbs. Load Capacity Per Caster

#### When Used w/ Stainless Steel Legs

**TA-25S-4** Set of 4 (Two with Brakes)

**TA-25S-6** Set of 6 (Two with Brakes)

#### When Used w/ Galvanized Legs

**TA-25G-4** Set of 4 (Two with Brakes)

**TA-25G-6** Set of 6 (Two with Brakes)

### Replacement Casters

For Work Tables

**TA-25** Set of 4  
(Two with Brakes)

**TA-25A** Set of 6  
(Two with Brakes)

200 lbs. Load Capacity Per Caster



#### Optional Standard Caster Upgrades:

<b>TA-25B</b> Set	For brakes on all wheels (Standard Casters) - Add price to the following models: TA-25, TA-25A, TA-25S-4, TA-25S-6, TA-25G-4, TA-25G-6
<b>TA-25C</b> Per Caster	Upgrade Standard Caster with Heavy Duty Urethane Wheels (Per Caster)

## EQUIPMENT STAND CASTERS



### Standard Casters

5" Urethane Wheels.

Maintains the Standard 24" Working Height

200 lbs. Load Capacity Per Caster

#### w/ Stainless Steel Legs

**TA-25ES** Set of 4 (Two with Brakes)

#### w/ Galvanized Legs

**TA-25EG** Set of 4 (Two with Brakes)

### HEAVY DUTY Casters

5" Urethane Wheels

400 lbs. Load Capacity Per Caster

**TA-255** Super Heavy Duty  
Set of 4 (Two with Brakes)

**TA-256** Super Heavy Duty  
Set of 6 (Two with Brakes)



### Enclosed Base Table Casters

Easy Bolt-On Style



**TA-255P** Set of 4 (Two with Brakes)

**TA-255AP** Set of 6 (Two with Brakes)

300 lbs. Load Capacity Per Caster

For brakes on all wheels (Enclosed Base Casters) - Add price to models: TA-255P or TA-255AP

**TA-255PB**

#### Optional Equipment Stand Caster Upgrade:

**TA-255B** For brakes on all wheels (Equipment Casters) - Add price to any of the following models: TA-255, TA-256, TA-25ES, TA-25EG

Contact Our SMART FABRICATION™ Department for more information at 800-645-3166 or email in your specifications to smartfab@advancetabco.com