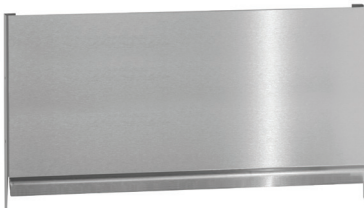




GAS

SPEC SERIES | BACKGUARDS AND SHELVES

IMPERIAL



Model BG-36



Model SHS-36



Model DHS-36

Model Numbers

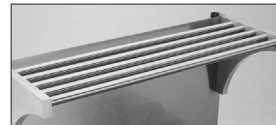
BG series Backguards

SHS series Single Deck Shelves

DHS series Double Deck Shelves

BACKGUARD AND HIGH SHELF FEATURES

- Stainless steel front and shelves
- 17" (432 mm) high backguard with no shelf
- 2-3/8" (60mm) flue outlet
- 20 1/2" (521 mm) high backguard with one shelf
- 35" (889 mm) high backguard with two shelves
- Solid tubular and slotted stainless steel shelves are available, 11" (279 mm) deep. Solid shelf is standard. Specify when ordering
- One year parts and labor warranty
- Optional extended length stainless steel backguards and shelves up to 120" (3048 mm) allow two or more ranges to be unitized to create a custom fabricated appearance

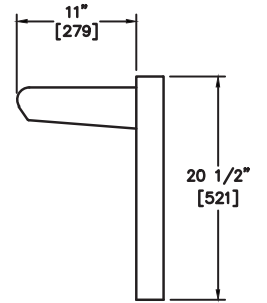
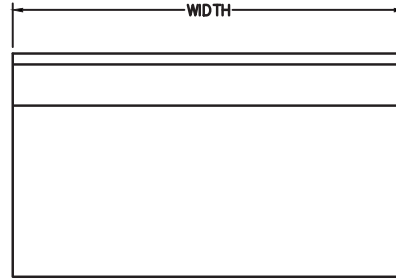
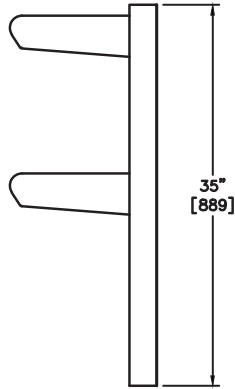
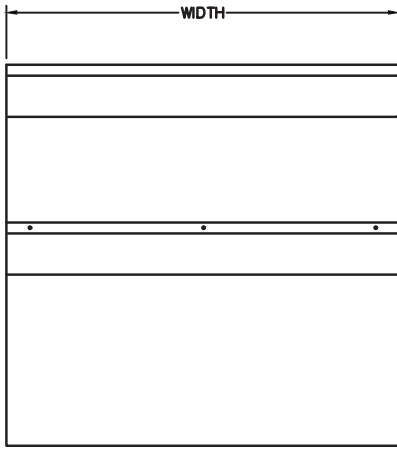


Solid shelf is standard. Tubular and Slotted stainless steel shelves are available, 11" (279) deep. Please specify when ordering.



GAS

SPEC SERIES | BACKGUARDS AND SHELVES



17" BACKGUARD | NO SHELF | STAINLESS STEEL

MODEL	WIDTH	HEIGHT	SHIP WEIGHT KG	SHIP WEIGHT LBS
BG-12	12" (305)	17" (432)	(8)	18
BG-18	18" (457)	17" (432)	(10)	23
BG-24	24" (610)	17" (432)	(13)	29
BG-36	36" (914)	17" (432)	(18)	39
BG-48	48" (1219)	17" (432)	(23)	51
BG-54	54" (1312)	17" (432)	(25)	56
BG-60	60" (1524)	17" (432)	(29)	63
BG-72	72" (1829)	17" (432)	(35)	76
BG-84	84" (2134)	17" (432)	(41)	90
BG-96	96" (2438)	17" (432)	(48)	105
BG-108	108" (2743)	17" (432)	(55)	122
BG-120	120" (3048)	17" (432)	(64)	140

35" DOUBLE DECK | HIGH SHELVES | STAINLESS STEEL

MODEL	WIDTH	HEIGHT	SHIP WEIGHT KG	SHIP WEIGHT LBS
DHS-12	12" (305)	35" (889)	(18)	39
DHS-18	18" (457)	35" (889)	(22)	48
DHS-24	24" (610)	35" (889)	(27)	60
DHS-36	36" (914)	35" (889)	(37)	82
DHS-48	48" (1219)	35" (889)	(48)	106
DHS-54	54" (1312)	35" (889)	(54)	119
DHS-60	60" (1524)	35" (889)	(60)	132
DHS-72	72" (1829)	35" (889)	(73)	160
DHS-84	84" (2134)	35" (889)	(86)	190
DHS-96	96" (2438)	35" (889)	(101)	222
DHS-108	108" (2743)	35" (889)	(116)	256
DHS-120	120" (3048)	35" (889)	(133)	292

20 1/2" SINGLE DECK | HIGH SHELF | STAINLESS STEEL

MODEL	WIDTH	HEIGHT	SHIP WEIGHT KG	SHIP WEIGHT LBS
SHS-12	12" (305)	20 1/2" (521)	(10)	23
SHS-18	18" (457)	20 1/2" (521)	(13)	29
SHS-24	24" (610)	20 1/2" (521)	(16)	36
SHS-36	36" (914)	20 1/2" (521)	(23)	51
SHS-48	48" (1219)	20 1/2" (521)	(30)	67
SHS-54	54" (1312)	20 1/2" (521)	(34)	75
SHS-60	60" (1524)	20 1/2" (521)	(38)	84
SHS-72	72" (1829)	20 1/2" (521)	(46)	102
SHS-84	84" (2134)	20 1/2" (521)	(55)	121
SHS-96	96" (2438)	20 1/2" (521)	(64)	141
SHS-108	108" (2743)	20 1/2" (521)	(74)	163
SHS-120	120" (3048)	20 1/2" (521)	(85)	187

OPTIONS AND ACCESSORIES

- Reinforcement channels for mounting cheesemelter/salamander
- Special width backguards
- Special height backguards
- Stainless steel end caps for double shelves
- Slotted Shelves and Tubular Shelves
- Optional extended length stainless steel backguards and shelves up to 120" (3048 mm) allow two or more ranges to be unitized to create a custom fabricated look.

