



The Signature of Quality®

### FEDERAL INDUSTRIES

A Standex Company  
215 Federal Avenue  
Belleville, WI 53508-9201

Phone: 800-356-4206  
Fax: 608-424-3234  
Email: geninfo@federalind.com  
Website: www.federalind.com

Project Name: \_\_\_\_\_

Item #: \_\_\_\_\_

Model #: \_\_\_\_\_ Qty: \_\_\_\_\_

Approval: \_\_\_\_\_

AIA#

SIS#

## REFRIGERATED SELF-SERVE MULTI-DECK SPECIALTY MERCHANDISER

### REMOTE UNITS DESIGNED FOR CONTINUOUS LINE-UPS

Designed with impulse in mind. Get maximum return from an attention-grabbing merchandiser and increase profits.



MODEL	DIMENSIONS ( Includes End Panels )
<input type="checkbox"/> LMD4878R	49.8 x 38 x 78 (in) 1265 x 965 x 1981 (mm)
<input type="checkbox"/> LMD7278R	73.8 x 38 x 78 (in) 1875 x 965 x 1981 (mm)
<input type="checkbox"/> LMD9678R	97.8 x 38 x 78 (in) 2484 x 965 x 1981 (mm)

### STANDARD FEATURES

#### Model Features

- Insulated with high-density urethane foam.
- Designed for continuous line-ups.
- White interior, black optional.
- Choice of six standard laminates on exterior base, other colors laminates are optional. Black trim and top front canopy.
- Energy saving night curtain.
- Thermometer
- Recessed casters w/ leg levelers

#### Refrigeration

- Electronic temperature control maintains average product temperature 38° to 40°. Note: Case temperature will vary if the air curtain is disrupted.
- Remote: Designed for R449a Refrigeration (EEV Included)

#### Shelving

- Adjustable white metal shelves with price tag molding. Shelves can be flat or slanted. Five tiers, black optional.

#### Lighting

- 3500K LED top light and shelf lights.
- DLC Certified, IP66 rated.

#### Agency Approvals

- UL Safety and UL Sanitation Listed to NSF Type II conditions.
- DOE 2017 Compliant

### OPTIONAL ACCESSORIES

- Special Laminate Base Finish
- Joining Kit For Continuous Line-ups
- Condensate Pump
- Black Interior (Including Shelving)
- White Top Front Canopy
- Reflective End Glass
- Top Condensing Unit w/Condo Pan Shipped Separately



WARRANTY\*  
One year Parts and Labor  
2nd thru 5th year part  
only service compressor  
(U.S.A and Canada)



Note: Information is subject to change at any time.  
Visit [www.federalind.com](http://www.federalind.com) for the most current specs.

AIA#

## REFRIGERATED SELF-SERVE MULTI-DECK SPECIALTY MERCHANDISER

SIS#

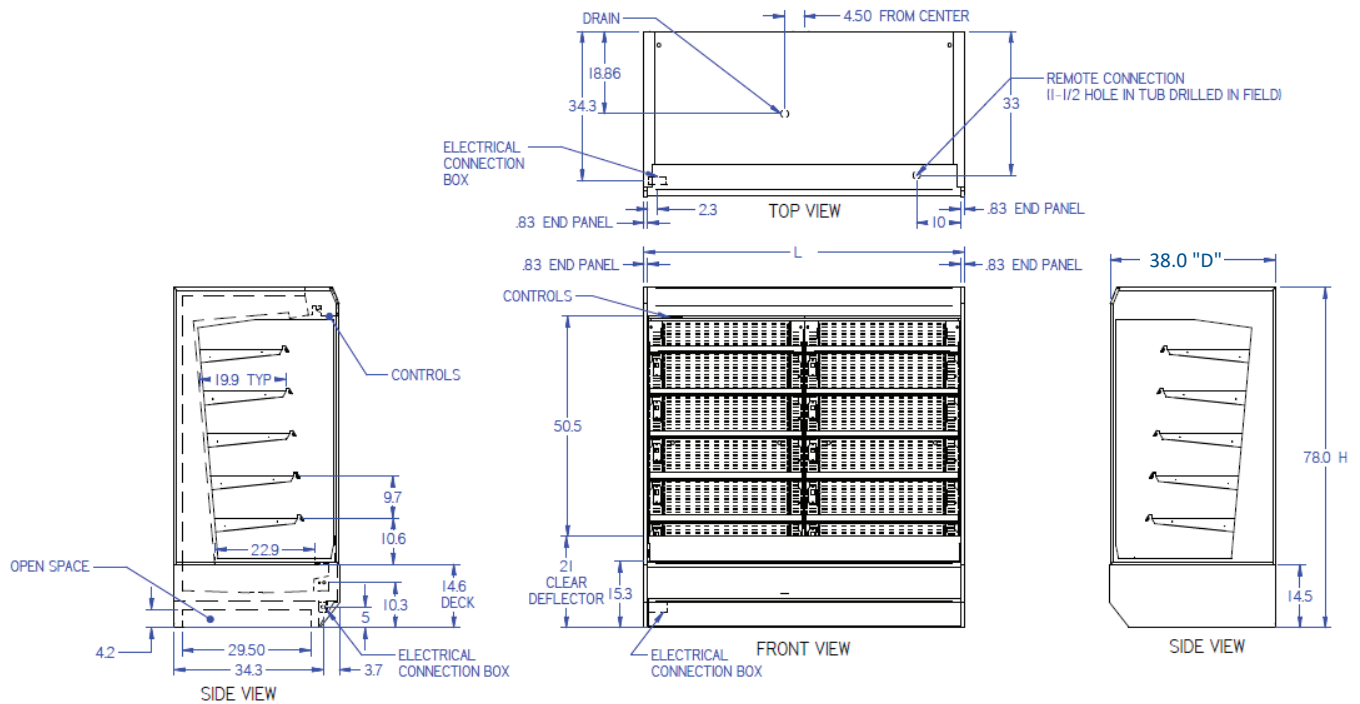
## Product Specifications

Intended Environment: Type I - Designed to operate in maximum ambient conditions of 75°F (24°C) and 55% relative humidity unless noted otherwise in system information below.

Zone	Intended Product To Be Displayed	Avg Prod Temp °F/°C
All	Packaged Refrigerated Products	38°F / (3.3°C)

DIMENSION: xx"/(mm)

DIMENSION TOLERANCE +/- 0.19 (4.8)



MODEL	DIMENSIONS				SHIPPING WHT		REMOTE 120/60/1
	L	D	H1	UNITS	LBS	KILO	
LMD4878R	49.8	38	78	in.	800	363	15 AMPS
	1265	965	1981	mm.			
LMD7278R	73.8	38	78	in.	1070	485	15 AMPS
	1875	965	1981	mm.			
LMD9678R	97.8	38	78	in.	1260	572	15 AMPS
	2484	965	1981	mm.			

- Case temperature will vary if the air curtain is disrupted.
- Refrigerated cases are designed to operate in a maximum of 80°F (27°C) ambient and 55% relative humidity.
- Due to continuing engineering improvements, specifications are subject to change without notice.
- If a GFCI circuit is required, a GFCI Breaker Must be used instead of GFCI receptacle.

**DOE 2017**  
Energy Efficiency  
Compliant



The Signature of Quality®

**FEDERAL INDUSTRIES**

A Standex Company

215 Federal Avenue, Belleville, Wisconsin 53508-9201

**Phone:** 800-356-4206

**Fax:** 608-424-3234

**Email:** Geninfo@Federalind.com

**Website:** Federalind.com