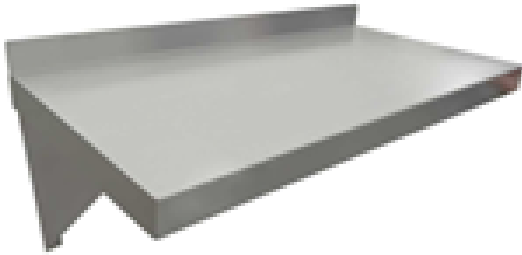


Stainless Steel Wall Shelving

- **Space Saver:** Mount this wall shelving and utilize unused wall space and save valuable counter space.
- **Corrosion Resistant:** Type 304 Stainless Steel in 18 gauge provides high resistance to corrosion.
- **Easy to Install:** Nut and bolt assembly & comes with instructions.
- **Strong:** Rated load capacity of 300lbs.
- **Knock Down Design :** Save on freight with knocked down packaging design.



WALL SHELVING



MICROWAVE WALL SHELVING



Stainless Steel Wall Shelf

Part Number	Description
JWS1224SS	Olympic SS Fabricated Wall Shelf 12" x 24" (2 supports)
JWS1236SS	Olympic SS Fabricated Wall Shelf 12" x 36" (2 supports)
JWS1248SS	Olympic SS Fabricated Wall Shelf 12" x 48" (2 supports)
JWS1260SS	Olympic SS Fabricated Wall Shelf 12" x 60" (3 supports)
JWS1272SS	Olympic SS Fabricated Wall Shelf 12" x 72" (3 supports)
JMS1824SS	Olympic SS Fabricated Microwave Shelf 18" x 24"
JMS2424SS	Olympic SS Fabricated Microwave Shelf 24" x 24"